



Section 3

Crime Index Data

Murder

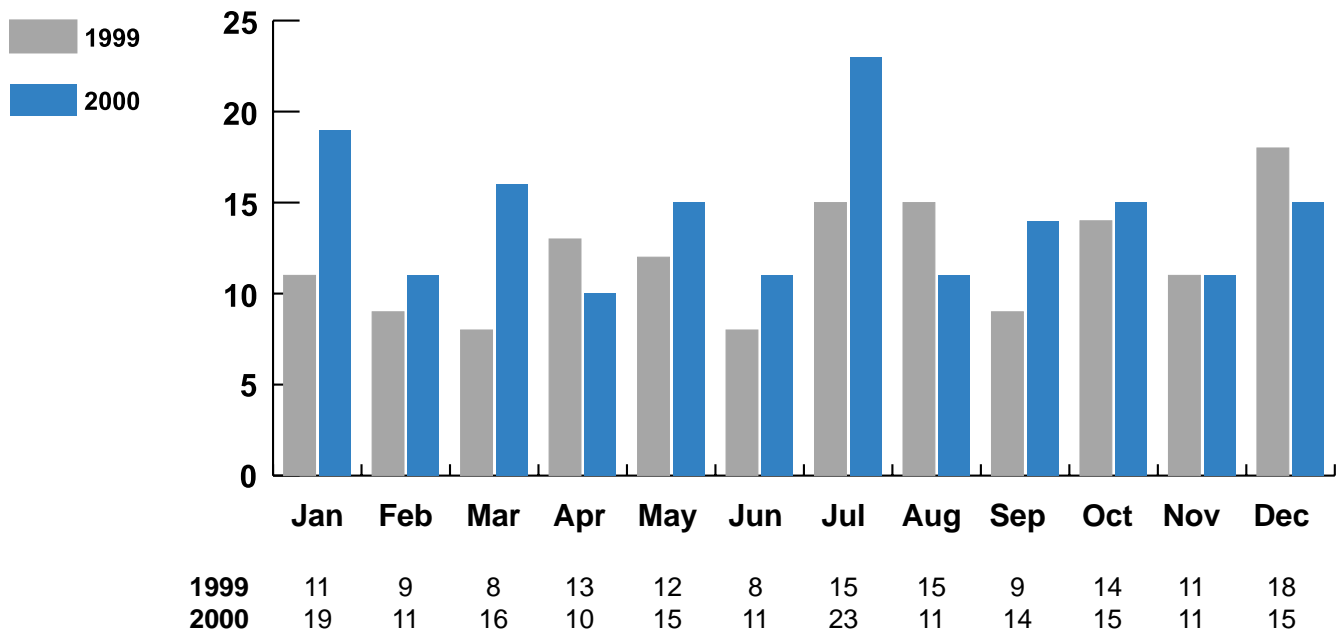
The willful (nonnegligent) killing of one human being by another.

Murders accounted for less than 1 percent of the crime index and 1 percent of violent crimes. The eight largest law enforcement jurisdictions accounted for 42 percent of murders in the State.

Trend

Year	Number of Offenses	Percent Change	Rate per 100,000	Percent Cleared
1995	259	-11.6%	10.6	78.4%
1996	219	-15.4%	8.8	83.1%
1997	249	13.7%	9.9	81.9%
1998	201	-19.3%	7.9	87.5%
1999	143	-28.9%	5.6	83.9%
2000	171¹	19.6%	6.3	77.8%

Murder by Month 1999 - 2000



¹The "total" number in the different murder categories will vary in accordance with offender data.

Murder

Most Common:

Month - December

Weapon - Handgun

Age of Offender - 18-20

Sex of Offender - Male

Race of Offender - Black

Weapon Type

Weapon Type	Number	Percent Distribution
Handgun	75	43.8%
Rifle	6	3.5%
Shotgun	18	10.5%
Other Firearms	21	12.3%
Knife/Cutting Instrument	23	13.5%
Club or Blunt Instrument	6	3.5%
Hands, Fists, etc.	9	5.3%
Fire	0	0.0%
Strangulation/Asphyxiation	3	1.8%
Other/Unknown	10	5.8%
Total	171	100.0%

Circumstances

Circumstances	Number	Percent Distribution
Arguments (Money, Property)	70	40.9%
Influenced by Alcohol, Drugs	11	6.4%
Felonious Acts	26	15.2%
Gang Killings	1	0.6%
Romantic Triangle	3	1.8%
Other/Unknown	60	35.1%
Total	171	100.0%

Murder

Situation

Situation	Number	Percent Distribution
Single Victim		
Single Offender	122	72.2%
Multiple Offenders	15	8.9%
Unknown Offender(s)	30	17.7%
Multiple Victim		
Single Offender	2	1.2%
Multiple Offenders	0	0.0%
Unknown Offender(s)	0	0.0%
Total	169	100.0%

Victim - Offender Relationship

Relationship	Number	Percent Distribution
Husband	4	2.3%
Wife	9	5.3%
Mother	0	0.0%
Father	0	0.0%
Son or Daughter	9	5.3%
Other Family	19	11.1%
Neighbor or Friend	2	1.2%
Boyfriend	4	2.3%
Girlfriend	7	4.1%
Other Acquaintance/ Known to Victim	63	36.8%
Stranger	22	12.9%
Unknown	32	18.7%
Total	171	100.0%

Murder

Age of Victim

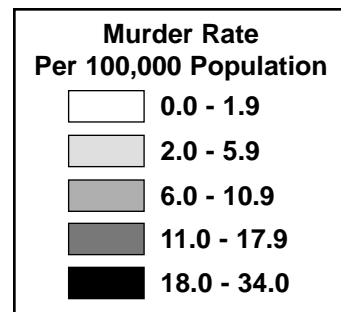
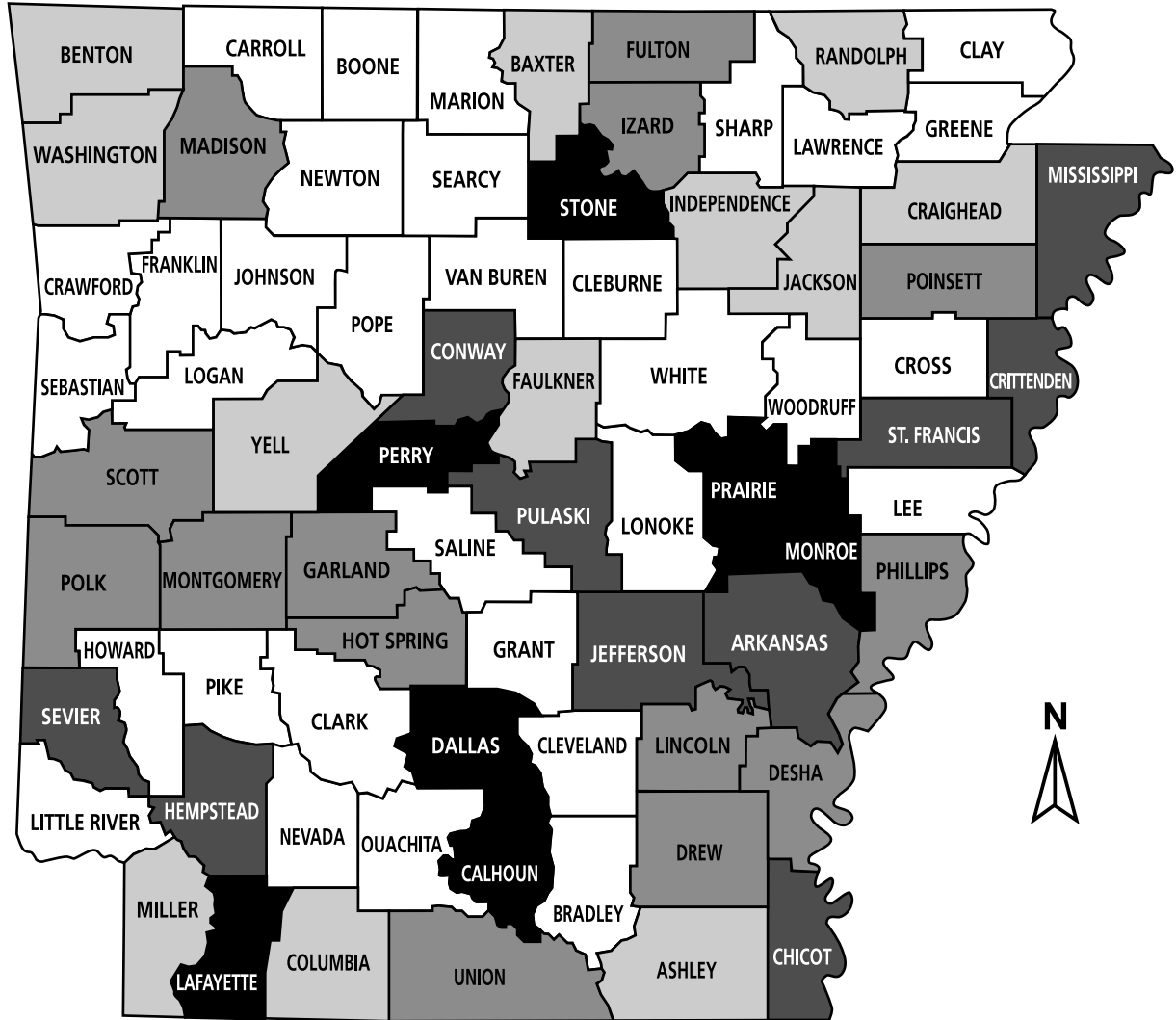
Age	Number	Percent Distribution
Under 1	3	1.8%
1 - 5	5	2.9%
6 - 10	0	0.0%
11 - 14	0	0.0%
15 - 17	8	4.7%
18 - 19	11	6.4%
20 - 24	29	17.0%
25 - 29	25	14.6%
30 - 34	18	10.5%
35 - 39	13	7.6%
40 - 44	12	7.0%
45 - 49	8	4.7%
50 - 54	9	5.3%
55 - 59	6	3.5%
60 - 64	11	6.4%
65 - 69	4	2.3%
70 - 74	3	1.8%
75 & Over	4	2.3%
Unknown	2	1.2%
Total	171	100.0%

Sex and Race of Victim

Sex and Race	Number	Percent Distribution
Male	133	77.8%
Female	38	22.2%
White	79	46.2%
Black	89	52.0%
Other	3	1.8%

Murder in Arkansas

Rate per 100,000



Murder in Arkansas Rate per 100,000

County	Population	Number of Offenses	Crime Rate	County	Population	Number of Offenses	Crime Rate
Boone County	33,369	0	0.0	Benton County	142,968	6	4.2
Bradley County	11,303	0	0.0	Miller County	41,260	2	4.8
Carroll County	23,593	0	0.0	Yell County	19,755	1	5.1
Clark County	22,427	0	0.0	Washington County	153,604	8	5.2
Clay County	17,839	0	0.0	Randolph County	18,760	1	5.3
Cleburne County	24,410	0	0.0	Jackson County	18,354	1	5.4
Cleveland County	8,967	0	0.0	Desha County	15,565	1	6.4
Cross County	20,225	0	0.0	Hot Spring County	30,548	2	6.5
Franklin County	17,605	0	0.0	Lincoln County	15,059	1	6.6
Grant County	16,748	0	0.0	Garland County	88,515	6	6.8
Greene County	38,136	0	0.0	Phillips County	28,343	2	7.1
Howard County	14,335	0	0.0	Madison County	13,950	1	7.2
Johnson County	22,380	0	0.0	Izard County	13,739	1	7.3
Lawrence County	18,171	0	0.0	Poinsett County	25,768	2	7.8
Lee County	13,306	0	0.0	Union County	47,118	4	8.5
Little River County	13,690	0	0.0	Scott County	11,153	1	9.0
Logan County	22,145	0	0.0	Fulton County	10,849	1	9.2
Marion County	15,615	0	0.0	Polk County	20,545	2	9.7
Nevada County	10,503	0	0.0	Montgomery County	9,158	1	10.9
Newton County	8,619	0	0.0	Drew County	18,284	2	10.9
Pike County	10,951	0	0.0	Chicot County	15,569	2	12.8
Searcy County	8,164	0	0.0	Hempstead County	23,150	3	13.0
Sharp County	18,578	0	0.0	Sevier County	15,373	2	13.0
Van Buren County	16,427	0	0.0	Mississippi County	52,308	7	13.4
White County	68,194	0	0.0	Pulaski County	365,929	49	13.4
Woodruff County	9,127	0	0.0	Arkansas County	21,708	3	13.8
Saline County	82,109	1	1.2	Conway County	20,806	3	14.4
Sebastian County	111,334	2	1.8	Crittenden County	52,536	8	15.2
Pope County	55,114	1	1.8	Jefferson County	84,649	14	16.5
Lonoke County	53,908	1	1.9	Stone County	11,757	2	17.0
Crawford County	53,868	1	1.9	St. Francis County	29,094	5	17.2
Ouachita County	52,802	1	1.9	Monroe County	10,468	2	19.1
Faulkner County	83,862	2	2.4	Perry County	10,141	2	19.7
Craighead County	81,383	2	2.5	Prairie County	9,728	2	20.6
Baxter County	38,418	1	2.6	Dallas County	9,347	2	21.4
Independence County	34,647	1	2.9	Lafayette County	9,269	2	21.6
Columbia County	25,867	1	3.9	Calhoun County	5,928	2	33.7
Ashley County	25,449	1	3.9				

Rape

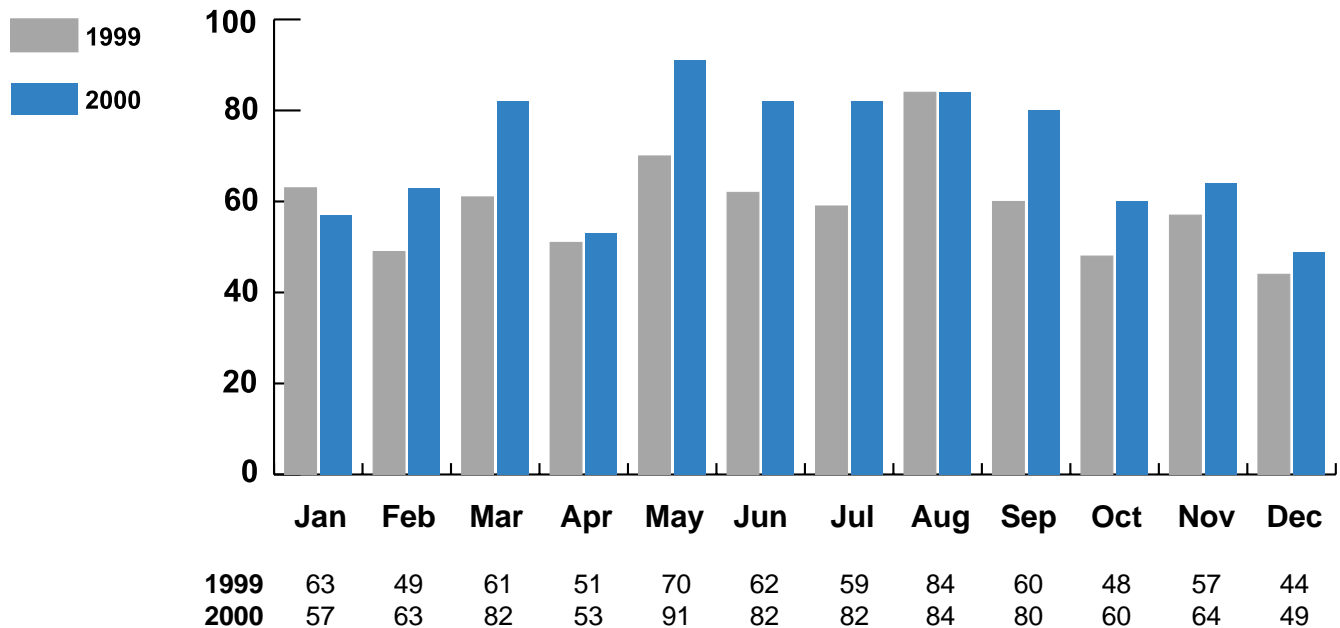
The carnal knowledge of a female through the use or threat of force. Assaults to commit forcible rape are also included.

Rapes accounted for less than 1 percent of the crime index and 7 percent of violent crimes. The eight largest law enforcement jurisdictions accounted for 45 percent of rapes in the state.

Trend

Year	Number of Offenses	Percent Change	Rate per 100,000	Percent Cleared
1995	923	-10.0%	37.6	61.1%
1996	1,041	12.8%	41.7	63.1%
1997	1,084	4.1%	43.2	61.5%
1998	881	-18.7%	34.8	57.1%
1999	708	-19.6%	27.8	60.3%
2000	847	19.6%	31.4	53.8%

Rape by Month 1999 - 2000



Rape

Most Common:

Month - May

Weapon - Verbal Threats, Fists, etc.

Location - Victim's Residence

Age of Offender - 18-20

Sex of Offender - Male

Race of Offender - White

Rape and Attempted Rape

Rape/Attempted Rape	Number	Percent Distribution
Rape	759	89.6%
Attempted Rape	88	10.4%
Total	847	100.0%

Location

Location of Rape	Number	Percent Distribution
Victim's Residence	339	40.0%
Suspect's Residence	187	22.1%
Other Residence	114	13.4%
Automobile	39	4.6%
Public Outdoor Area (Street, Park)	56	6.6%
Field, Vacant Lot, Wooded Area	25	3.0%
Motel/Hotel	25	3.0%
Bar/Lounge	2	0.2%
Place of Employment	5	0.6%
School/Playground	1	0.1%
All Other Locations	27	3.2%
Unknown	27	3.2%
Total	847	100.0%

Rape

Time of Day

Time of Day 0000 - 2400 Hours	Number	Percent Distribution
0001 - 0200	111	13.1%
0201 - 0400	77	9.1%
0401 - 0600	30	3.5%
0601 - 0800	28	3.3%
0801 - 1000	23	2.7%
1001 - 1200	31	3.7%
1201 - 1400	34	4.0%
1401 - 1600	36	4.3%
1600 - 1800	46	5.4%
1801 - 2000	50	5.9%
2001 - 2200	81	9.6%
2201 - 2400	90	10.6%
Unknown	210	24.8%
Total	847	100.0%

Day of Week

Day of Week	Number	Percent Distribution
Sunday	122	14.4%
Monday	88	10.4%
Tuesday	89	10.5%
Wednesday	92	10.8%
Thursday	93	11.0%
Friday	109	12.9%
Saturday	160	18.9%
Unknown	94	11.1%
Total	847	100.0%

Rape

Victim Characteristics

Age of Victim	White	Black	Other	Total
5 & Under	21	12	0	33
6 - 9	36	19	0	55
10 - 13	80	67	0	147
14 - 17	118	70	0	188
18 - 20	71	29	1	101
21 - 24	55	30	0	85
25 - 29	36	22	0	58
30 - 34	36	25	1	62
35 - 39	32	15	0	47
40 - 49	32	15	0	47
50 - 59	13	2	0	15
60 & Over	6	3	0	9
Unknown	0	0	0	0
Total	536	309	2	847

Weapon Used to Exert Force

Weapon Used	Number	Percent Distribution
Firearm	22	2.6%
Knife/Sharp Instrument	41	4.8%
Club/Blunt Instrument	15	1.8%
Verbal Threats, Fists, etc.	765	90.3%
Unknown	4	0.5%
Total	847	100.0%

Rape

The first race listed is the race of the victim, with the second race being that of the offender(s). For example: black/white means that the victim was black and the offender was white.

Victim - Offender Race Relationship

Victim/Offender(s) Race	Number	Percent Distribution
White/White	384	45.4%
Black/Black	289	34.1%
Other/Other	0	0.0%
Total Intraracial Rapes	673	79.5%
White/Black	118	13.9%
White/Other	0	0.0%
Black/White	5	0.6%
Black/Other	0	0.0%
Other/White	0	0.0%
Other/Black	0	0.0%
White/White & Black ¹	2	0.2%
Black/White & Black ¹	2	0.2%
Total Interracial Rapes	127	14.9%
White/Unknown	28	3.3%
Black/Unknown	12	1.4%
Other/Unknown	0	0.0%
Unknown/White	0	0.0%
Unknown/Black	0	0.0%
Unknown/Unknown	7	0.9%
Total Unknown Rapes	47	5.6%
Total	847	100.0%

¹ Rapes involving offenders of more than one race are counted as interracial.

Rape

Relationship of Offender to Victim

Relationship	Number	Percent Distribution
Known to Victim	520	61.4%
Unknown to Victim	172	20.3%
Family Member	108	12.8%
Unknown	47	5.5%
Total	847	100.0%

Rapes Involving Family Members

Relationship	Number	Percent Distribution
Husband	17	2.0%
Ex-Husband	5	0.6%
Father	27	3.2%
Stepfather	0	0.0%
Grandfather	5	0.6%
Stepgrandfather	0	0.0%
Brother	9	1.1%
Half Brother	0	0.0%
Stepbrother	0	0.0%
Uncle	0	0.0%
Great Uncle	0	0.0%
Cousin	0	0.0%
Nephew	0	0.0%
Father-in-law	3	0.4%
Brother-in-law	0	0.0%
Son-in-law	0	0.0%
Stepson	0	0.0%
Son	1	0.1%
Unknown	41	4.8%
Total	108	12.8%

Rape

Number of Offenders Per Rape

Offender(s) Per Offense	Number	Percent Distribution
One	765	90.3%
Two	49	5.8%
Three	23	2.7%
Four	6	0.7%
More Than Four	4	0.5%
Unknown	0	0.0%
Total	847	100.0%

Offender Characteristics

Age of Offender	White	Black	Unknown	Total
Under 10	1	1	0	2
10 - 15	20	34	4	58
16 - 20	104	117	1	222
21 - 25	54	67	2	123
26 - 30	58	59	3	120
31 - 35	35	40	2	77
36 - 40	38	37	0	75
41 - 45	16	14	0	30
46 - 50	19	16	0	35
51 - 60	18	7	0	25
61 and Over	9	1	0	10
Unknown	61	91	51	203
Total	433	484	63	980¹

¹ The number of offenders does not equal the number of victims due to cases of multiple offenders per victim.

Rape

Rape Reporting Time Lapse

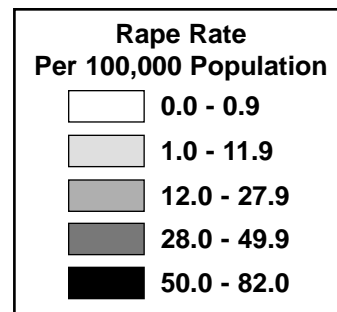
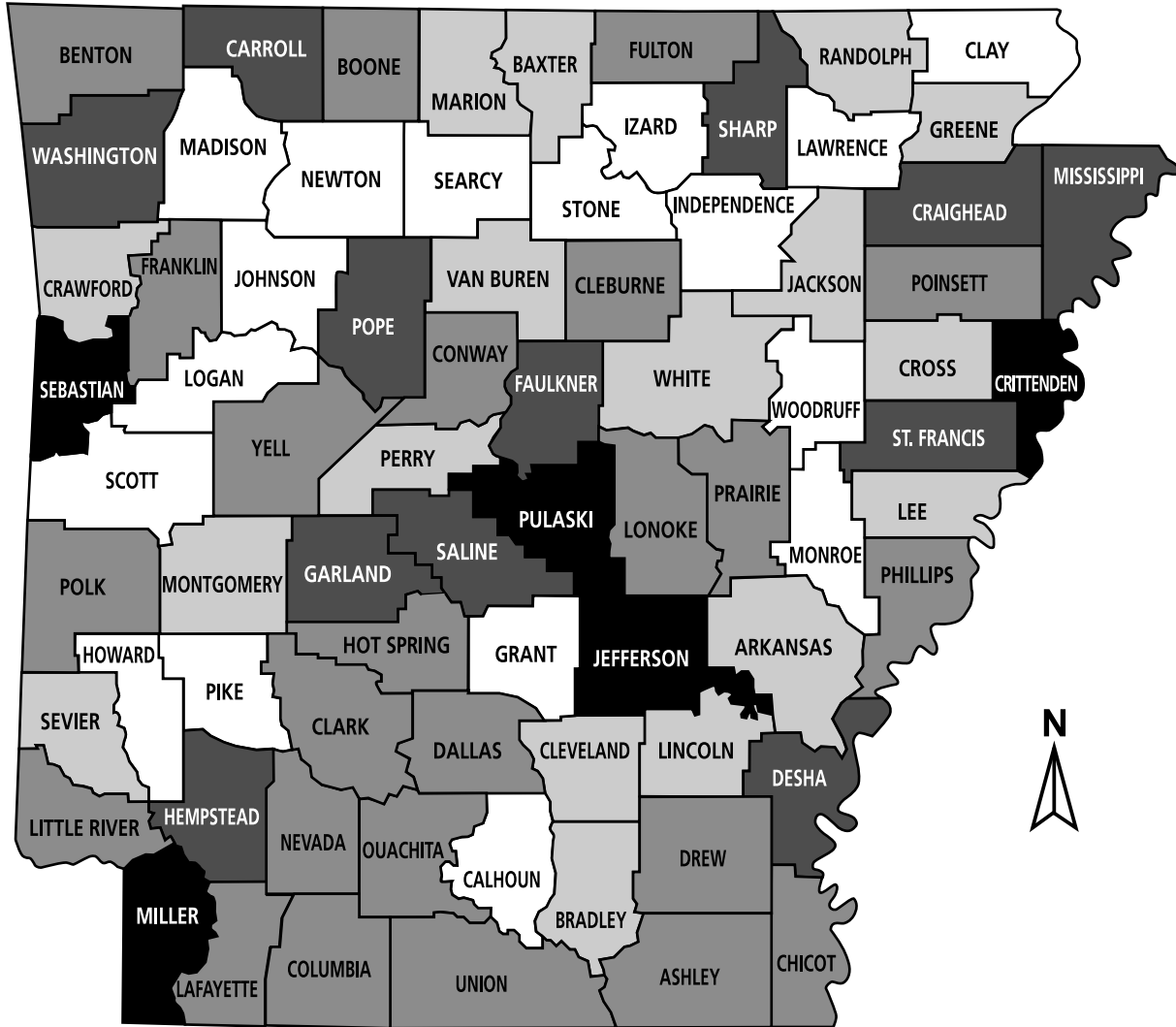
Hours Reporting Time	Number	Percent Distribution
Less than 1	143	16.9%
1 - 4	154	18.2%
4 - 8	52	6.1%
8 - 12	34	4.0%
12 - 24	65	7.7%
More than 24	188	22.2%
Unknown	211	24.9%
Total	847	100.0%

Medical Attention for Victims

Type of Rape	Received Medical Attention	No Medical Attention	Unknown	Total
Attempt	20 (2.4%)	54 (6.4%)	14 (1.7%)	88 (10.4%)
Actual	482 (56.9%)	192 (22.7%)	85 (10.0%)	759 (89.6%)
Total	502 (59.3%)	246 (29.0%)	99 (11.7%)	847 (100.0%)

Rape in Arkansas

Rate per 100,000



Rape in Arkansas Rate per 100,000

County	Population	Number of Offenses	Crime Rate	County	Population	Number of Offenses	Crime Rate
Calhoun County	5,928	0	0.0	Franklin County	17,605	3	17.0
Clay County	17,839	0	0.0	Boone County	33,369	6	18.0
Grant County	16,748	0	0.0	Fulton County	10,849	2	18.4
Howard County	14,335	0	0.0	Ouachita County	52,802	10	18.9
Independence County	34,647	0	0.0	Nevada County	10,503	2	19.0
Izard County	13,739	0	0.0	Conway County	20,806	4	19.2
Johnson County	22,380	0	0.0	Chicot County	15,569	3	19.3
Lawrence County	18,171	0	0.0	Poinsett County	25,768	5	19.4
Logan County	22,145	0	0.0	Hot Spring County	30,548	6	19.6
Madison County	13,950	0	0.0	Prairie County	9,728	2	20.6
Monroe County	10,468	0	0.0	Dallas County	9,347	2	21.4
Newton County	8,619	0	0.0	Lafayette County	9,269	2	21.6
Pike County	10,951	0	0.0	Drew County	18,284	4	21.9
Scott County	11,153	0	0.0	Little River County	13,690	3	21.9
Searcy County	8,164	0	0.0	Clark County	22,427	5	22.3
Stone County	11,757	0	0.0	Benton County	142,968	33	23.1
Woodruff County	9,127	0	0.0	Union County	47,118	11	23.3
Arkansas County	21,708	1	4.6	Phillips County	28,343	7	24.7
Baxter County	38,418	2	5.2	Yell County	19,755	5	25.3
Van Buren County	16,427	1	6.1	Columbia County	25,867	7	27.1
Marion County	15,615	1	6.4	Saline County	82,109	24	29.2
Sevier County	15,373	1	6.5	Carroll County	23,593	7	29.7
Lincoln County	15,059	1	6.6	St. Francis County	29,094	9	30.9
Lee County	13,306	1	7.5	Desha County	15,565	5	32.1
Greene County	38,136	3	7.9	Sharp County	18,578	6	32.3
White County	68,194	6	8.8	Craighead County	81,383	30	36.9
Bradley County	11,303	1	8.8	Washington County	153,604	59	38.4
Crawford County	53,868	5	9.3	Faulkner County	83,862	33	39.4
Perry County	10,141	1	9.9	Pope County	55,114	22	39.9
Cross County	20,225	2	9.9	Garland County	88,515	36	40.7
Randolph County	18,760	2	10.7	Hempstead County	23,150	11	47.5
Jackson County	18,354	2	10.9	Mississippi County	52,308	26	49.7
Montgomery County	9,158	1	10.9	Pulaski County	365,929	210	57.4
Cleveland County	8,967	1	11.2	Miller County	41,260	25	60.6
Polk County	20,545	3	14.6	Crittenden County	52,536	32	60.9
Lonoke County	53,908	8	14.8	Sebastian County	111,334	70	62.9
Ashley County	25,449	4	15.7	Jefferson County	84,649	69	81.5
Cleburne County	24,410	4	16.4				

Robbery

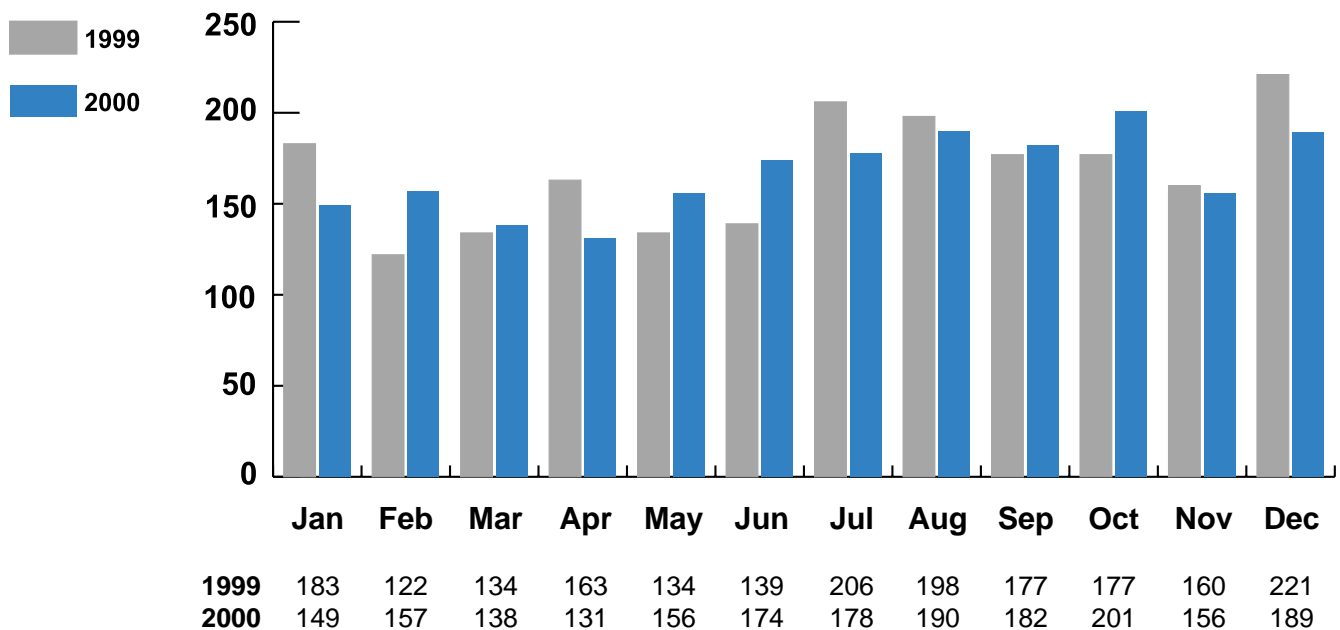
The taking, or attempting to take, anything of value under confrontational circumstances from a person by use of force, threat of force, or by putting the victim in fear of immediate harm.

Robberies accounted for 2 percent of the crime index and 17 percent of violent crimes. The eight largest law enforcement jurisdictions accounted for 59 percent of robberies in the state.

Trend

Year	Number of Offenses	Percent Change	Rate per 100,000	Percent Cleared
1995	3,115	-1.1%	127.0	31.9%
1996	2,858	-8.3%	114.4	34.4%
1997	2,802	-2.0%	111.6	33.2%
1998	2,436	-13.1%	96.2	34.6%
1999	2,014	-17.3%	79.0	36.4%
2000	2,001	-0.6%	74.3	35.3%

Robbery by Month 1999 -2000



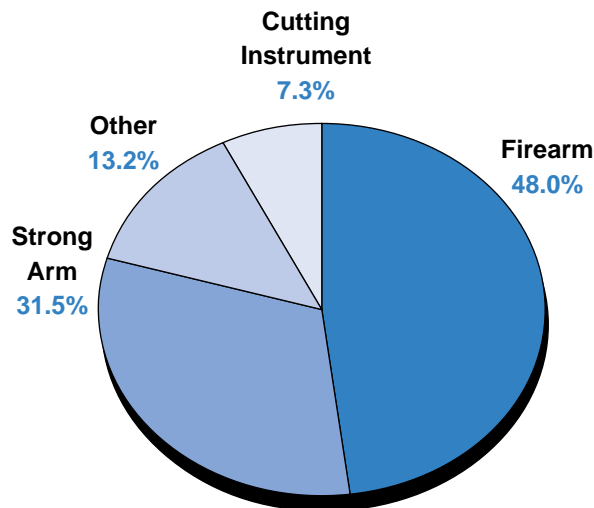
Robbery

Most Common:
Month - October
Weapon - Firearm
Age of Offender - 18-20
Sex of Offender - Male
Race of Offender - Black

Premise

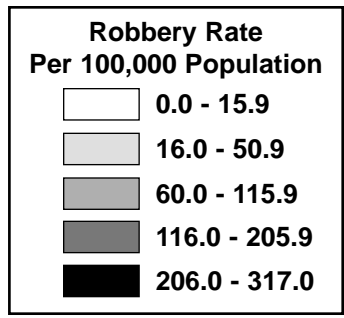
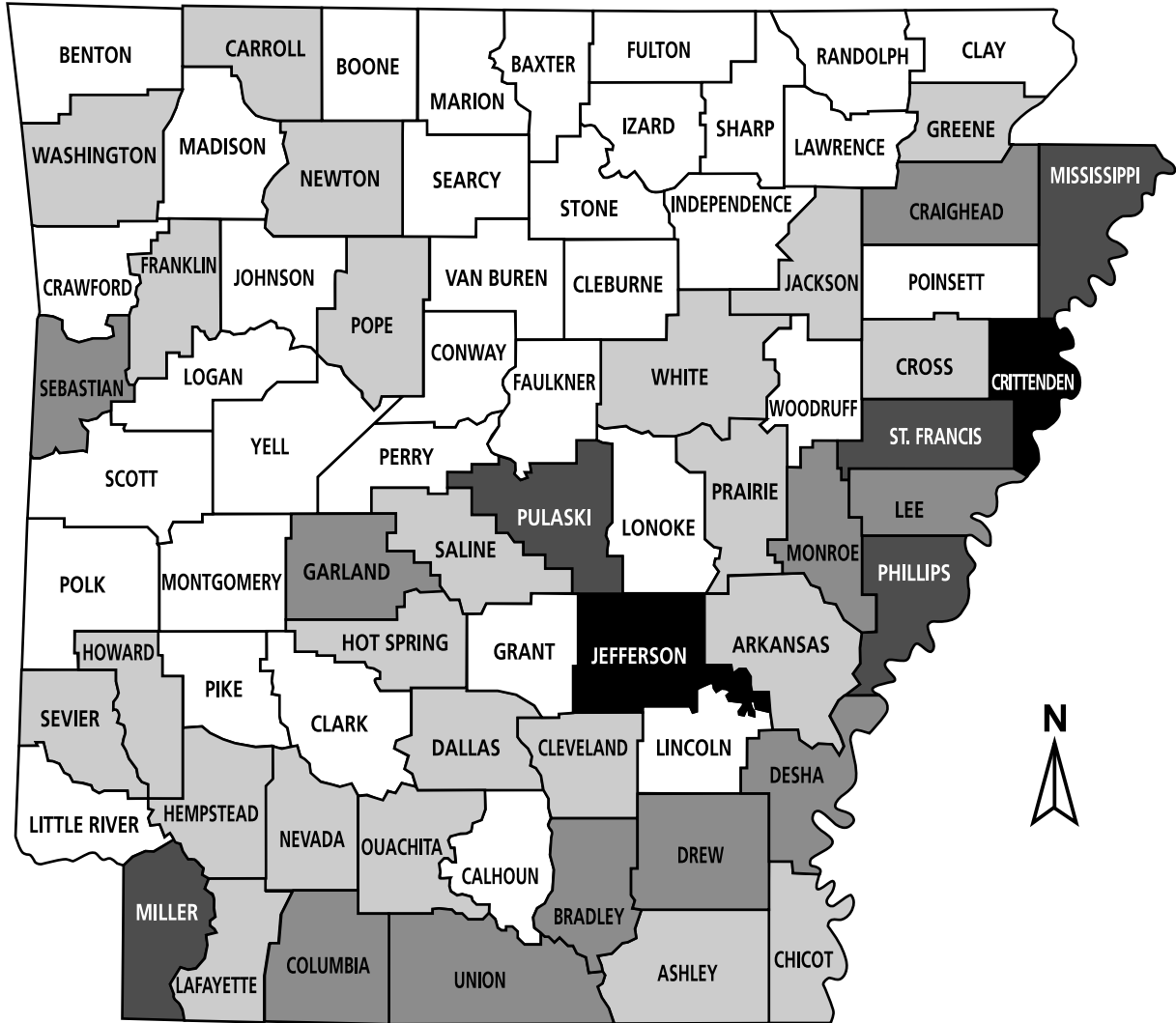
Premise	Number	Percent Distribution	Value Stolen	Percent Distribution	Average Value
Street/Highway	617	30.8%	\$404,902	32.4%	\$656
Commercial House	340	17.0%	\$166,668	13.3%	\$490
Service Station	65	3.3%	\$17,484	1.4%	\$269
Convenience Store	134	6.7%	\$94,682	7.6%	\$707
Residence	421	21.0%	\$292,461	23.3%	\$695
Bank	25	1.3%	\$124,658	10.0%	\$4,986
Miscellaneous	399	19.9%	\$150,116	12.0%	\$376
Total	2,001	100.0%	\$1,250,971	100.0%	\$625

Weapons



Robbery in Arkansas

Rate per 100,000



Robbery in Arkansas

Rate per 100,000

County	Population	Number of Offenses	Crime Rate	County	Population	Number of Offenses	Crime Rate
Calhoun County	5,928	0	0.0	Sevier County	15,373	3	19.5
Clay County	17,839	0	0.0	Carroll County	23,593	5	21.2
Fulton County	10,849	0	0.0	Lafayette County	9,269	2	21.6
Grant County	16,748	0	0.0	Pope County	55,114	12	21.8
Izard County	13,739	0	0.0	Saline County	82,109	18	21.9
Logan County	22,145	0	0.0	Cleveland County	8,967	2	22.3
Madison County	13,950	0	0.0	Franklin County	17,605	4	22.7
Marion County	15,615	0	0.0	Newton County	8,619	2	23.2
Montgomery County	9,158	0	0.0	Howard County	14,335	4	27.9
Perry County	10,141	0	0.0	Cross County	20,225	6	29.7
Pike County	10,951	0	0.0	Hempstead County	23,150	7	30.2
Polk County	20,545	0	0.0	Prairie County	9,728	3	30.8
Randolph County	18,760	0	0.0	Dallas County	9,347	3	32.1
Scott County	11,153	0	0.0	Jackson County	18,354	6	32.7
Searcy County	8,164	0	0.0	Washington County	153,604	53	34.5
Stone County	11,757	0	0.0	Arkansas County	21,708	8	36.9
Van Buren County	16,427	0	0.0	Nevada County	10,503	4	38.1
Woodruff County	9,127	0	0.0	Ashley County	25,449	10	39.3
Poinsett County	25,768	1	3.9	Hot Spring County	30,548	14	45.8
Sharp County	18,578	1	5.4	Ouachita County	52,802	25	47.3
Boone County	33,369	2	6.0	Lee County	13,306	8	60.1
Baxter County	38,418	3	7.8	Garland County	88,515	61	68.9
Cleburne County	24,410	2	8.2	Desha County	15,565	11	70.7
Independence County	34,647	3	8.7	Bradley County	11,303	9	79.6
Johnson County	22,380	2	8.9	Drew County	18,284	15	82.0
Crawford County	53,868	5	9.3	Union County	47,118	40	84.9
Benton County	142,968	14	9.8	Sebastian County	111,334	101	90.7
Faulkner County	83,862	9	10.7	Craighead County	81,383	74	90.9
Lawrence County	18,171	2	11.0	Columbia County	25,867	28	108.2
Lincoln County	15,059	2	13.3	Monroe County	10,468	12	114.6
Clark County	22,427	3	13.4	Miller County	41,260	55	133.3
Conway County	20,806	3	14.4	Phillips County	28,343	38	134.1
Little River County	13,690	2	14.6	Mississippi County	52,308	71	135.7
Lonoke County	53,908	8	14.8	St. Francis County	29,094	49	168.4
Yell County	19,755	3	15.2	Pulaski County	365,929	747	204.1
Greene County	38,136	7	18.4	Crittenden County	52,536	135	257.0
White County	68,194	13	19.1	Jefferson County	84,649	268	316.6
Chicot County	15,569	3	19.3				

Aggravated Assault

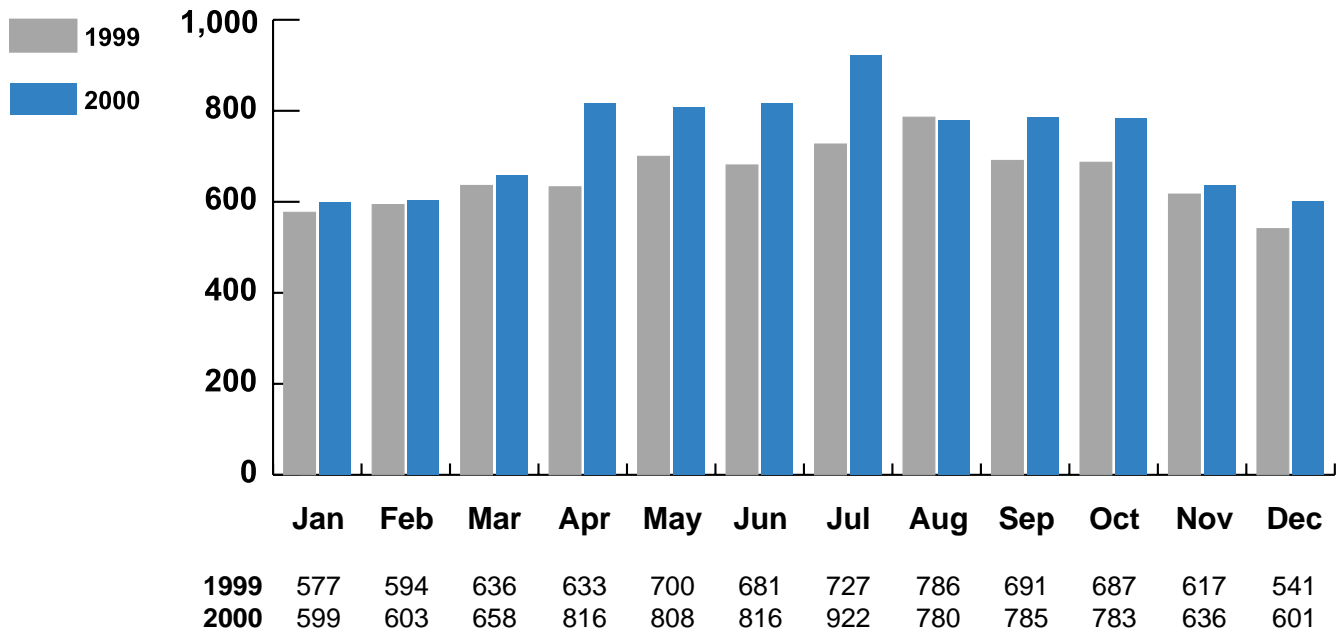
An unlawful attack by one person upon another for the purpose of inflicting severe bodily injury, usually accompanied by the use of a weapon or other means likely to produce death or serious bodily harm. Attempts are included.

Aggravated assaults accounted for 8 percent of the crime index and 75 percent of violent crimes. The eight largest law enforcement jurisdictions accounted for 36 percent of aggravated assaults in the state.

Trend

Year	Number of Offenses	Percent Change	Rate per 100,000	Percent Cleared
1995	9,416	-6.8%	383.9	58.0%
1996	8,996	-4.5%	360.1	59.3%
1997	9,095	1.1%	362.3	61.8%
1998	8,868	-2.5%	350.2	59.7%
1999	7,870	-11.3%	308.7	60.0%
2000	8,807	11.9%	326.8	53.3%

Aggravated Assault by Month 1999 - 2000



Aggravated Assault

Most Common:

Month - July

Weapon - Hands, Fists, Feet

Age of Offender - 25-29

Sex of Offender - Male

Race of Offender - White

Weapon Type

Weapon Type	Number	Percent Distribution
Firearm	1,770	20.1%
Cutting Instrument	1,372	15.6%
Hands/Fists/Feet	3,361	38.2%
Other Weapon	2,304	26.1%
Total	8,807	100.0%

Aggravated Assault in Arkansas

Rate per 100,000

County	Population	Number of Offenses	Crime Rate	County	Population	Number of Offenses	Crime Rate
Pike County	10,951	0	0.0	Saline County	82,109	161	196.1
Woodruff County	9,127	0	0.0	Ouachita County	52,802	113	214.0
Lafayette County	9,269	1	10.8	Lawrence County	18,171	39	214.6
Howard County	14,335	2	14.0	Prairie County	9,728	21	215.9
Johnson County	22,380	7	31.3	Hot Spring County	30,548	68	222.6
Grant County	16,748	8	47.8	Carroll County	23,593	54	228.9
Logan County	22,145	11	49.7	Phillips County	28,343	66	232.9
Conway County	20,806	11	52.9	Crawford County	53,868	130	241.3
Bradley County	11,303	6	53.1	Washington County	153,604	376	244.8
Cleveland County	8,967	5	55.8	Sevier County	15,373	40	260.2
Sharp County	18,578	11	59.2	White County	68,194	178	261.0
Nevada County	10,503	9	85.7	Ashley County	25,449	72	282.9
Clark County	22,427	20	89.2	Cleburne County	24,410	71	290.9
Fulton County	10,849	10	92.2	Chicot County	15,569	49	314.7
Benton County	142,968	153	107.0	Yell County	19,755	63	318.9
Perry County	10,141	11	108.5	Marion County	15,615	51	326.6
Little River County	13,690	15	109.6	Hempstead County	23,150	79	341.3
Searcy County	8,164	9	110.2	Garland County	88,515	314	354.7
Pope County	55,114	61	110.7	Lee County	13,306	51	383.3
Greene County	38,136	43	112.8	Cross County	20,225	80	395.6
Calhoun County	5,928	7	118.1	Arkansas County	21,708	91	419.2
Polk County	20,545	25	121.7	Randolph County	18,760	79	421.1
Boone County	33,369	41	122.9	Jackson County	18,354	80	435.9
Monroe County	10,468	13	124.2	Sebastian County	111,334	491	441.0
Franklin County	17,605	22	125.0	Madison County	13,950	62	444.4
Stone County	11,757	15	127.6	Columbia County	25,867	120	463.9
Clay County	17,839	23	128.9	Montgomery County	9,158	44	480.5
Drew County	18,284	24	131.3	Pulaski County	365,929	1,810	494.6
Izard County	13,739	19	138.3	Mississippi County	52,308	280	535.3
Scott County	11,153	16	143.5	Miller County	41,260	241	584.1
Independence County	34,647	54	155.9	Desha County	15,565	95	610.3
Newton County	8,619	14	162.4	Union County	47,118	320	679.1
Craighead County	81,383	138	169.6	Poinsett County	25,768	176	683.0
Baxter County	38,418	66	171.8	Dallas County	9,347	71	759.6
Lincoln County	15,059	26	172.7	Crittenden County	52,536	444	845.1
Van Buren County	16,427	30	182.6	St. Francis County	29,094	269	924.6
Lonoke County	53,908	102	189.2	Jefferson County	84,649	871	1,029.0
Faulkner County	83,862	159	189.6				

Burglary

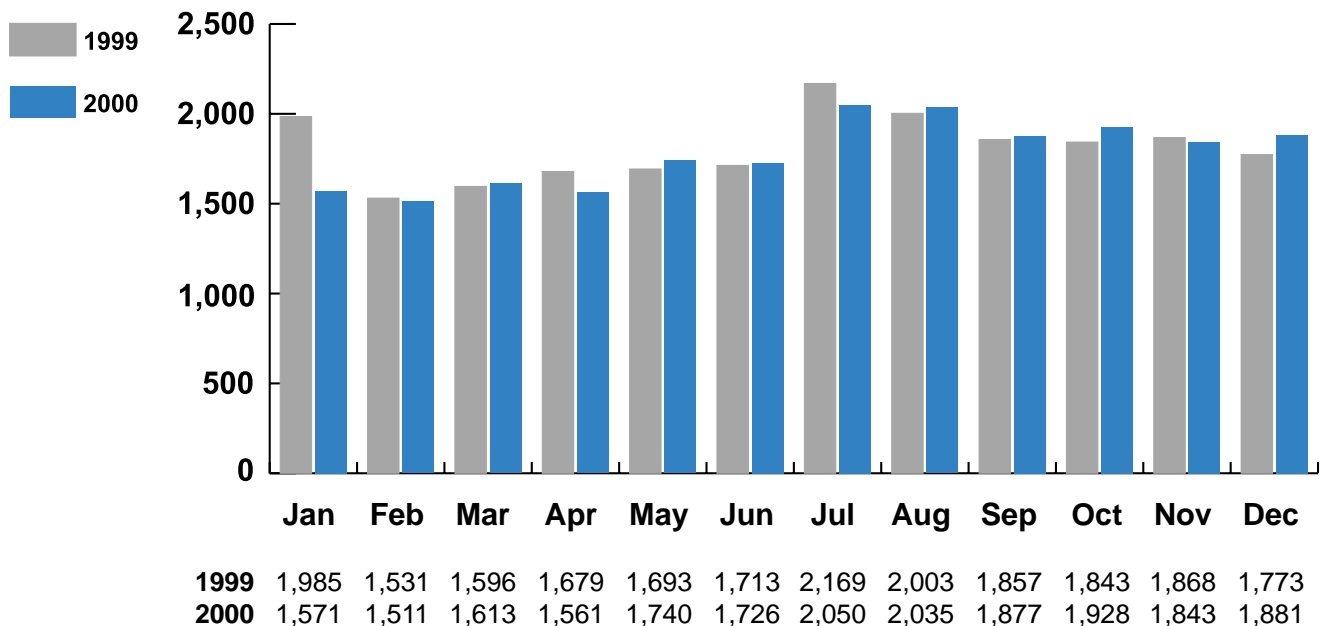
The unlawful entry of a structure to commit a felony or theft.

Burglaries accounted for 19 percent of the crime index and 22 percent of property crimes. The eight largest law enforcement jurisdictions accounted for 39 percent of burglaries in the state.

Trend

Year	Number of Offenses	Percent Change	Rate per 100,000	Percent Cleared
1995	24,702	-7.9%	1,007.1	18.3%
1996	23,831	-3.5%	953.8	19.2%
1997	25,361	6.4%	1,010.2	18.4%
1998	23,452	-7.5%	926.0	17.2%
1999	21,710	-7.4%	851.7	16.9%
2000	21,336	-1.7%	791.8	16.3%

Burglary by Month 1999 - 2000



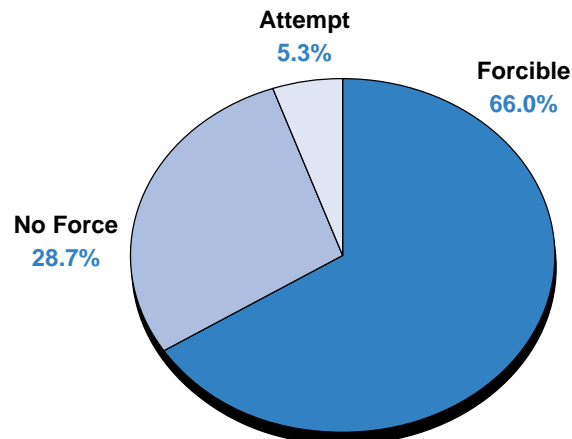
Burglary

Most Common:
Month - July
Type - Forcible Entry
Age of Offender - 18-20
Sex of Offender - Male
Race of Offender - White

Premise, Time and Value

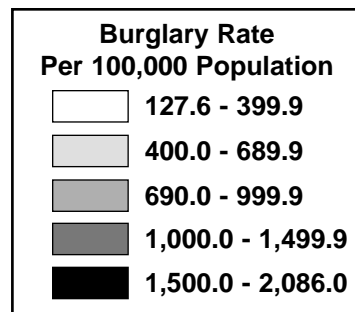
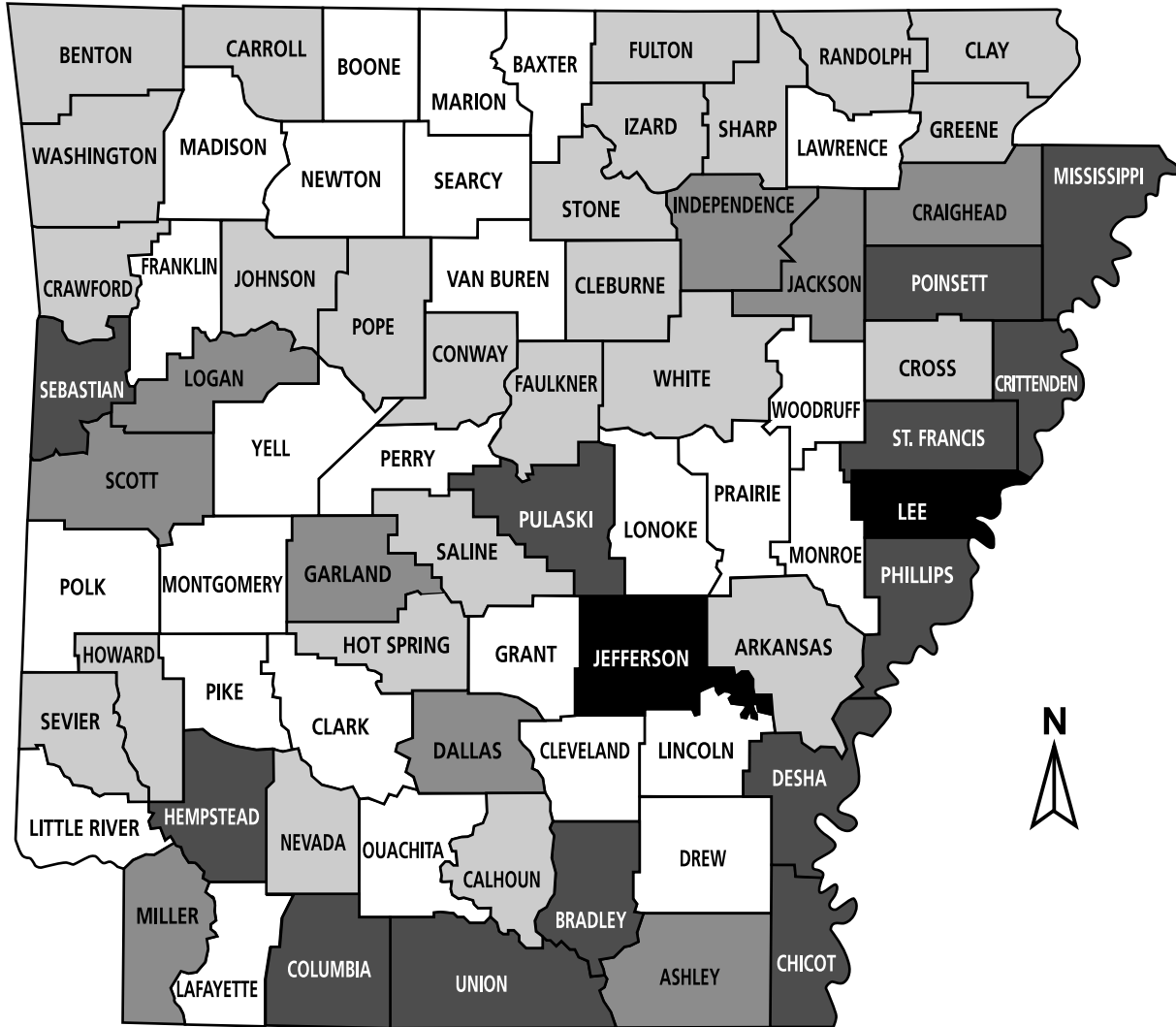
Premise	Number	Percent Distribution	Value Stolen	Percent Distribution	Average Value
Residence					
Night	4,848	22.7%	\$3,656,377	18.3%	\$754
Day	6,261	29.3%	\$5,768,127	28.9%	\$921
Unknown	4,518	21.2%	\$5,351,348	26.9%	\$1,184
Total Residence	15,627	73.2%	\$14,775,852	74.1%	\$946
Non-Residence					
Night	2,826	13.3%	\$2,416,512	12.1%	\$855
Day	1,301	6.1%	\$868,667	4.4%	\$668
Unknown	1,582	7.4%	\$1,868,001	9.4%	\$1,181
Total Non-Residence	5,709	26.8%	\$5,153,180	25.9%	\$903
Total	21,336	100.0%	\$19,929,032	100.0%	\$934

Type of Entry



Burglary in Arkansas

Rate per 100,000



Burglary in Arkansas Rate per 100,000

County	Population	Number of Offenses	Crime Rate	County	Population	Number of Offenses	Crime Rate
Newton County	8,619	11	127.6	Washington County	153,604	794	516.9
Yell County	19,755	31	156.9	Pope County	55,114	290	526.2
Boone County	33,369	60	179.8	White County	68,194	369	541.1
Baxter County	38,418	74	192.6	Sevier County	15,373	86	559.4
Polk County	20,545	40	194.7	Arkansas County	21,708	122	562.0
Franklin County	17,605	39	221.5	Nevada County	10,503	60	571.3
Grant County	16,748	38	226.9	Carroll County	23,593	134	572.2
Pike County	10,951	25	228.3	Howard County	14,335	83	579.0
Perry County	10,141	24	236.7	Cleburne County	24,410	147	602.2
Woodruff County	9,127	22	241.0	Fulton County	10,849	66	608.4
Lincoln County	15,059	38	252.3	Saline County	82,109	501	610.2
Searcy County	8,164	21	257.2	Conway County	20,806	132	634.4
Clark County	22,427	62	276.5	Hot Spring County	30,548	194	635.1
Monroe County	10,468	29	277.0	Scott County	11,153	77	690.4
Cleveland County	8,967	25	278.8	Ashley County	25,449	178	699.4
Little River County	13,690	40	292.2	Logan County	22,145	170	767.7
Lawrence County	18,171	58	319.2	Independence County	34,647	266	767.7
Montgomery County	9,158	31	338.5	Craighead County	81,383	668	820.8
Lonoke County	53,908	184	341.3	Dallas County	9,347	77	823.8
Lafayette County	9,269	33	356.0	Jackson County	18,354	164	893.5
Ouachita County	52,802	189	357.9	Miller County	41,260	380	921.0
Madison County	13,950	50	358.4	Garland County	88,515	838	946.7
Marion County	15,615	59	377.8	Union County	47,118	486	1,031.5
Prairie County	9,728	37	380.3	Columbia County	25,867	279	1,078.6
Van Buren County	16,427	63	383.5	St. Francis County	29,094	314	1,079.3
Drew County	18,284	71	388.3	Crittenden County	52,536	602	1,145.9
Benton County	142,968	600	419.7	Sebastian County	111,334	1,309	1,175.7
Randolph County	18,760	79	421.1	Chicot County	15,569	184	1,181.8
Clay County	17,839	78	437.2	Poinsett County	25,768	309	1,199.2
Calhoun County	5,928	27	455.5	Hempstead County	23,150	293	1,265.7
Sharp County	18,578	85	457.5	Desha County	15,565	204	1,310.6
Izard County	13,739	64	465.8	Pulaski County	365,929	4,839	1,322.4
Johnson County	22,380	105	469.2	Bradley County	11,303	152	1,344.8
Cross County	20,225	96	474.7	Mississippi County	52,308	725	1,386.0
Stone County	11,757	57	484.8	Phillips County	28,343	421	1,485.4
Faulkner County	83,862	407	485.3	Lee County	13,306	238	1,788.7
Greene County	38,136	190	498.2	Jefferson County	84,649	1,765	2,085.1
Crawford County	53,868	278	516.1				

Theft

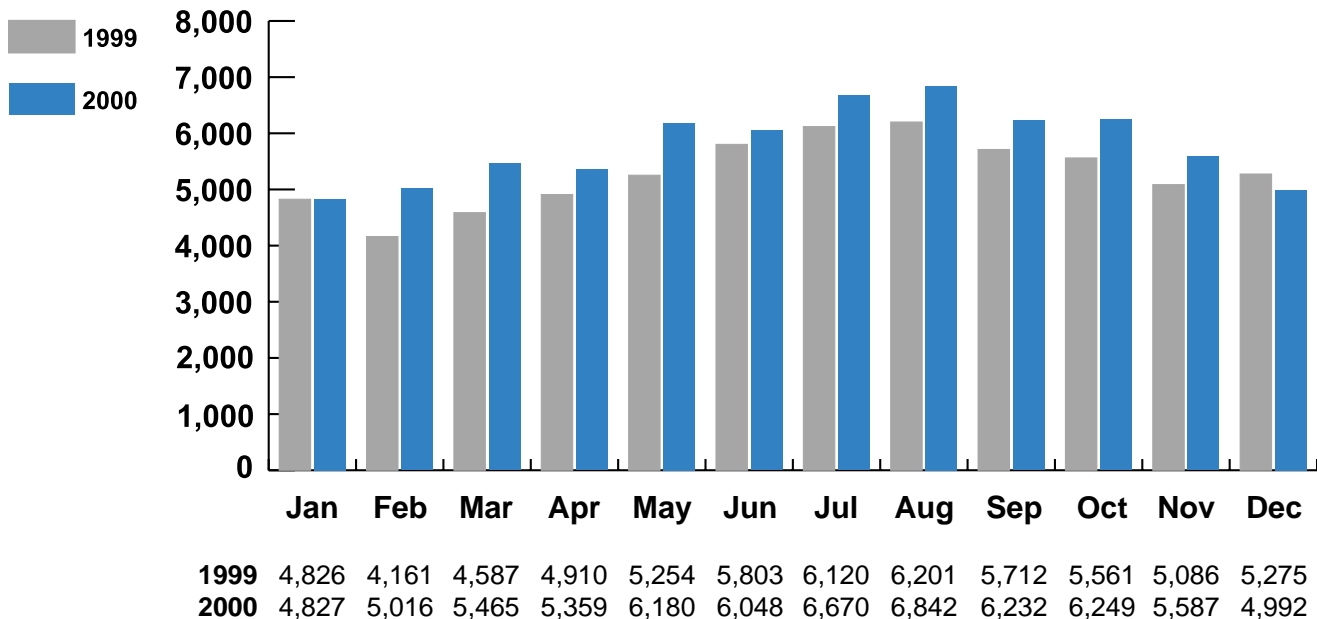
The unlawful taking or stealing of property or articles without the use of force, violence or fraud.

Thefts accounted for 63 percent of the crime index and 71 percent of property crimes. The eight largest law enforcement jurisdictions accounted for 42 percent of thefts in the state.

Trend

Year	Number of Offenses	Percent Change	Rate per 100,000	Percent Cleared
1995	69,728	2.1%	2,842.9	24.0%
1996	72,820	4.4%	2,914.6	25.1%
1997	71,823	-1.4%	2,860.8	24.6%
1998	65,082	-9.4%	2,569.8	22.6%
1999	63,496	-2.4%	2,490.9	21.2%
2000	69,467	9.4%	2,578.0	19.4%

Theft by Month 1999 - 2000



Theft

Most Common:
Month - August
Type - From Motor Vehicles
Age of Offender - 18-20
Sex of Offender - Male
Race of Offender - White

Theft by Type

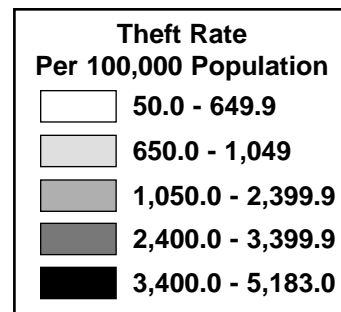
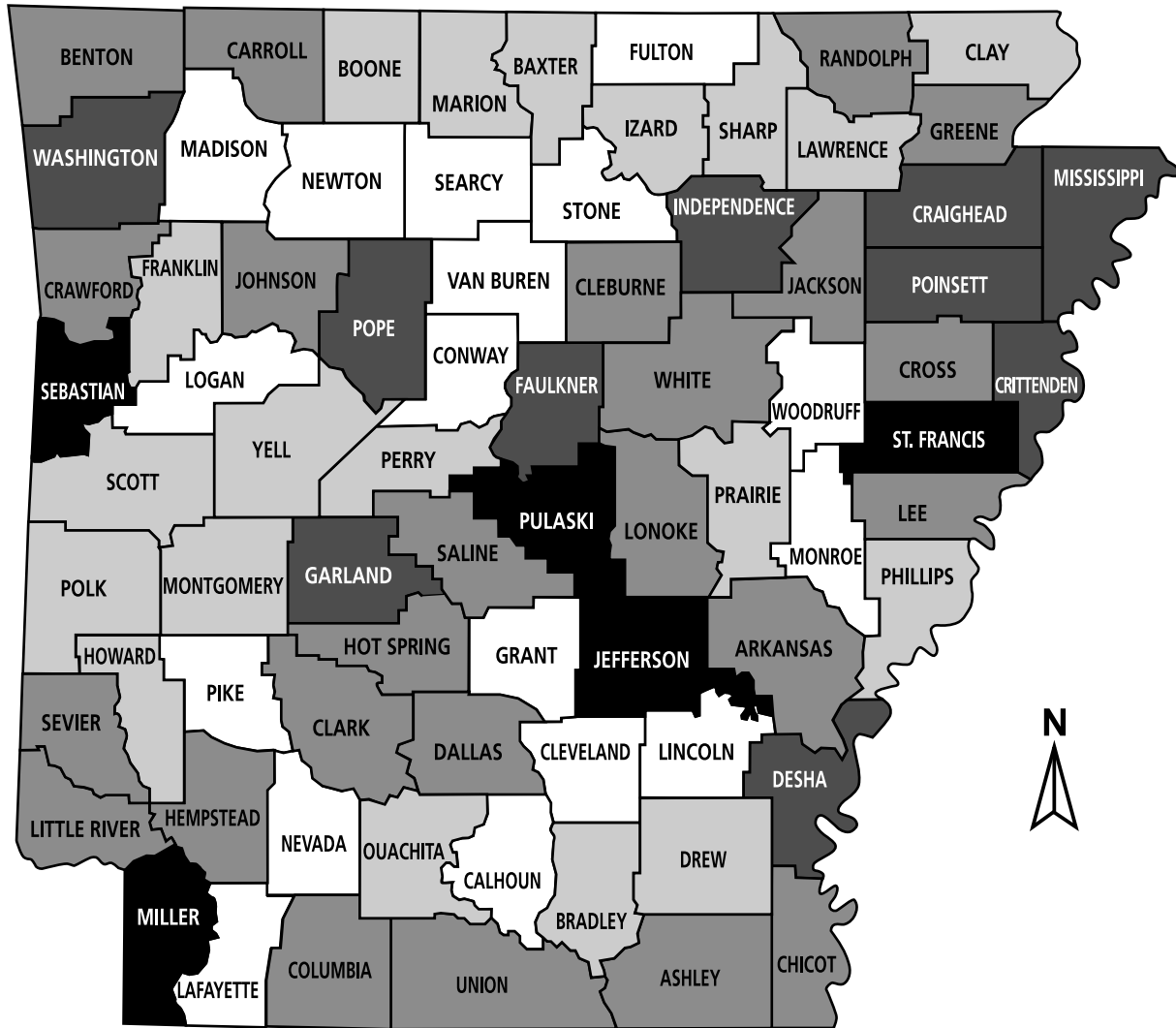
Premise	Number	Percent Distribution	Value Stolen	Percent Distribution	Average Value
Pocket-Picking	365	0.5%	\$90,496	0.2%	\$248
Purse Snatching	303	0.4%	\$70,166	0.2%	\$232
Shoplifting	7,883	11.3%	\$612,912	1.6%	\$78
From Motor Vehicles	13,313	19.2%	\$6,153,236	15.8%	\$462
Motor Vehicle Parts	5,390	7.8%	\$2,368,418	6.1%	\$439
Bicycles	2,686	3.9%	\$509,221	1.3%	\$190
From Buildings	9,795	14.1%	\$7,965,243	20.5%	\$813
From Coin Operated Machines	507	0.7%	\$203,375	0.5%	\$401
Other	29,225	42.1%	\$20,924,665	53.8%	\$716
Total	69,467	100.0%	\$38,897,540	100.0%	\$560

Theft by Value

Premise	Number	Percent Distribution	Value Stolen	Percent Distribution	Average Value
Over \$200	25,757	37.1%	\$36,582,971	94.1%	\$1,420
\$50 To \$200	16,163	23.3%	\$1,883,858	4.8%	\$117
Under \$50	27,547	39.6%	\$430,711	1.1%	\$16
Total	69,467	100.0%	\$38,897,540	100.0%	\$560

Theft in Arkansas

Rate per 100,000



Theft in Arkansas Rate per 100,000

County	Population	Number of Offenses	Crime Rate	County	Population	Number of Offenses	Crime Rate
Pike County	10,951	6	54.8	Little River County	13,690	214	1,563.2
Searcy County	8,164	16	196.0	Johnson County	22,380	352	1,572.8
Van Buren County	16,427	34	207.0	Clark County	22,427	356	1,587.4
Lafayette County	9,269	21	226.6	Cross County	20,225	327	1,616.8
Woodruff County	9,127	21	230.1	Carroll County	23,593	386	1,636.1
Calhoun County	5,928	18	303.6	Jackson County	18,354	309	1,683.6
Nevada County	10,503	33	314.2	Crawford County	53,868	947	1,758.0
Cleveland County	8,967	29	323.4	Greene County	38,136	685	1,796.2
Logan County	22,145	83	374.8	Randolph County	18,760	339	1,807.0
Monroe County	10,468	40	382.1	Hempstead County	23,150	420	1,814.3
Grant County	16,748	70	418.0	Benton County	142,968	2,677	1,876.6
Madison County	13,950	64	458.8	Arkansas County	21,708	415	1,911.7
Lincoln County	15,059	75	498.0	Hot Spring County	30,548	591	1,934.7
Stone County	11,757	62	527.3	Lonoke County	53,908	1,098	2,034.9
Newton County	8,619	46	533.7	Union County	47,118	965	2,048.0
Conway County	20,806	123	591.2	Dallas County	9,347	192	2,054.1
Fulton County	10,849	70	645.2	Cleburne County	24,410	515	2,109.8
Sharp County	18,578	125	672.8	Chicot County	15,569	337	2,164.6
Franklin County	17,605	122	693.0	White County	68,194	1,502	2,202.5
Izard County	13,739	97	706.0	Columbia County	25,867	575	2,222.9
Montgomery County	9,158	67	731.6	Lee County	13,306	296	2,224.6
Polk County	20,545	155	754.4	Saline County	82,109	1,868	2,275.0
Prairie County	9,728	76	781.3	Crittenden County	52,536	1,269	2,415.5
Lawrence County	18,171	148	814.5	Washington County	153,604	3,912	2,546.8
Bradley County	11,303	93	822.8	Poinsett County	25,768	659	2,557.4
Marion County	15,615	137	877.4	Pope County	55,114	1,474	2,674.5
Drew County	18,284	173	946.2	Desha County	15,565	448	2,878.3
Perry County	10,141	100	986.1	Faulkner County	83,862	2,457	2,929.8
Scott County	11,153	111	995.2	Independence County	34,647	1,024	2,955.5
Clay County	17,839	187	1,048.3	Craighead County	81,383	2,502	3,074.4
Yell County	19,755	223	1,128.8	Garland County	88,515	2,900	3,276.3
Phillips County	28,343	342	1,206.6	Mississippi County	52,308	1,758	3,360.9
Ouachita County	52,802	684	1,295.4	Miller County	41,260	1,553	3,763.9
Baxter County	38,418	501	1,304.1	St. Francis County	29,094	1,157	3,976.8
Howard County	14,335	187	1,304.5	Jefferson County	84,649	3,514	4,151.3
Boone County	33,369	446	1,336.6	Sebastian County	111,334	5,111	4,590.7
Ashley County	25,449	375	1,473.5	Pulaski County	365,929	18,964	5,182.4
Sevier County	15,373	239	1,554.7				

Motor Vehicle Theft

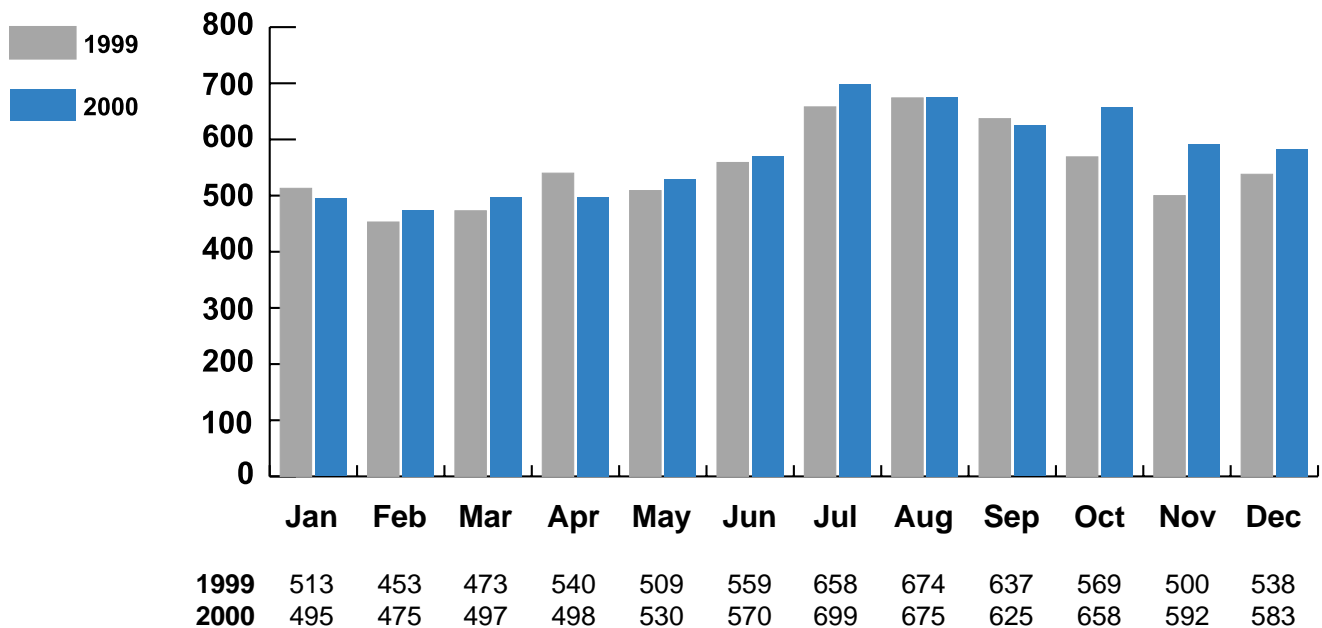
The unlawful taking or stealing of a motor vehicle, including attempts.

Motor vehicle thefts accounted for 6 percent of the crime index and 7 percent of property crimes. The eight largest law enforcement jurisdictions accounted for 48 percent of motor vehicle thefts in the state.

Trend

Year	Number of Offenses	Percent Change	Rate per 100,000	Percent Cleared
1995	8,063	4.7%	328.7	31.3%
1996	7,822	-3.0%	313.1	30.6%
1997	7,888	0.8%	314.2	31.2%
1998	7,149	-9.4%	282.3	30.8%
1999	6,623	-7.4%	259.8	29.8%
2000	6,897	4.1%	256.0	24.8%

Motor Vehicle Theft by Month 1999 - 2000



Motor Vehicle Theft

Most Common:

Month - July

Type - Automobile

Sex of Offender - Male

Race of Offender - White

Age of Offender - 18-20

Motor Vehicle Theft by Type

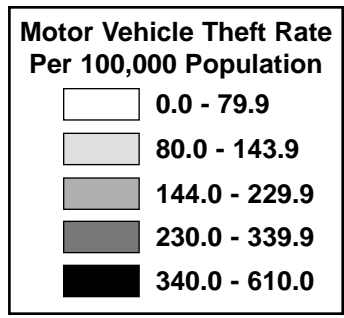
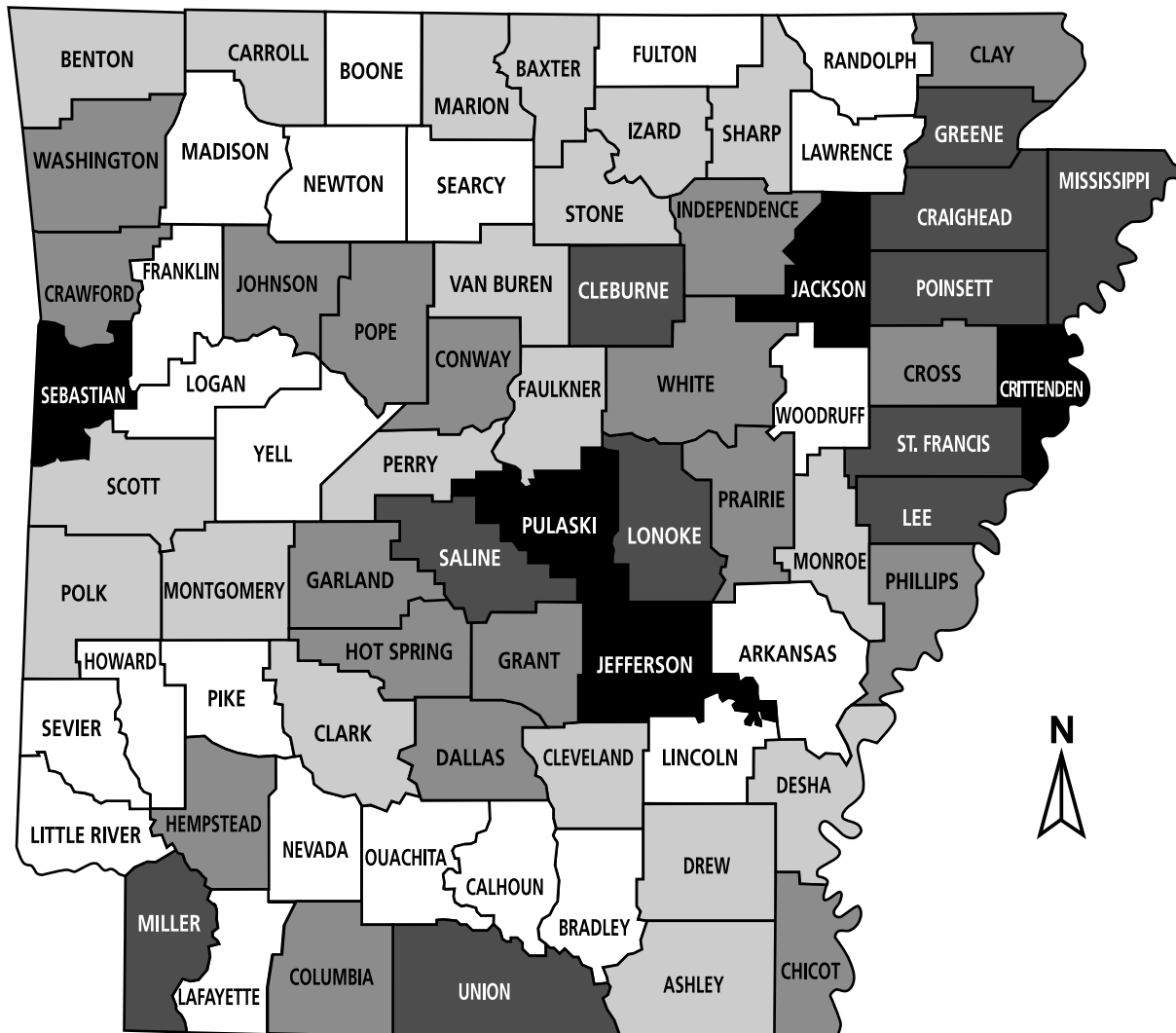
Type	Number	Percent Distribution	Percent Cleared
Autos	4,268	61.9%	25.4%
Trucks & Buses	1,559	22.6%	25.9%
Other Vehicles	1,070	15.5%	20.7%
Total	6,897	100.0%	24.8%

Recovery by Jurisdiction

Where Stolen/ Where Recovered	1999	2000	Percent Change
Local/Local	2,592	2,721	5.0%
Local/Other	1,711	1,750	2.3%
Other/Local	794	764	-3.8%
Total	5,097	5,235	3.5%

Motor Vehicle Theft Rate in Arkansas

Rate per 100,000



Motor Vehicle Theft in Arkansas Rate per 100,000

County	Population	Number of Offenses	Crime Rate	County	Population	Number of Offenses	Crime Rate
Newton County	9,127	0	0.0	Carroll County	23,593	30	131.4
Yell County	15,059	2	13.3	Perry County	10,141	14	138.1
Boone County	14,335	3	20.9	Monroe County	10,468	15	143.3
Baxter County	22,145	5	22.6	Johnson County	22,380	33	147.5
Polk County	17,605	4	22.7	Conway County	20,806	32	153.8
Franklin County	8,619	2	23.2	Pope County	55,114	87	157.9
Grant County	10,951	4	36.5	Cross County	20,225	32	158.2
Pike County	19,755	9	45.6	Grant County	16,748	27	161.2
Perry County	8,164	4	49.0	Hempstead County	23,150	38	164.1
Woodruff County	33,369	17	50.9	Prairie County	9,728	16	164.5
Lincoln County	11,303	6	53.1	Independence County	34,647	57	164.5
Searcy County	13,950	8	57.3	Crawford County	53,868	96	178.2
Clark County	18,760	11	58.6	Dallas County	9,347	17	181.9
Monroe County	18,171	11	60.5	Clay County	17,839	33	185.0
Cleveland County	10,849	7	64.5	Hot Spring County	30,548	57	186.6
Little River County	15,373	10	65.0	Washington County	153,604	289	188.1
Lawrence County	10,503	7	66.6	Columbia County	25,867	51	197.2
Montgomery County	5,928	4	67.5	Garland County	88,515	177	200.0
Lonoke County	21,708	15	69.1	Phillips County	28,343	57	201.1
Lafayette County	13,690	10	73.0	Chicot County	15,569	33	212.0
Ouachita County	9,269	7	75.5	White County	68,194	146	214.1
Madison County	52,802	41	77.6	Greene County	38,136	90	236.0
Marion County	142,968	116	81.1	Poinsett County	25,768	61	236.7
Prairie County	8,967	8	89.2	Lonoke County	53,908	131	243.0
Van Buren County	20,545	19	92.5	Miller County	41,260	102	247.2
Drew County	38,418	38	98.9	Cleburne County	24,410	62	254.0
Benton County	11,757	12	102.1	Union County	47,118	134	284.4
Randolph County	25,449	26	102.2	Craighead County	81,383	232	285.1
Clay County	22,427	23	102.6	Saline County	82,109	235	286.2
Calhoun County	16,427	17	103.5	Mississippi County	52,308	150	286.8
Sharp County	18,284	19	103.9	Lee County	13,306	44	330.7
Izard County	15,615	17	108.9	St. Francis County	29,094	98	336.8
Johnson County	9,158	10	109.2	Jackson County	18,354	76	414.1
Cross County	18,578	21	113.0	Jefferson County	84,649	378	446.5
Stone County	13,739	16	116.5	Crittenden County	52,536	276	525.4
Faulkner County	11,153	14	125.5	Sebastian County	111,334	588	528.1
Greene County	15,565	20	128.5	Pulaski County	365,929	2,232	610.0
Crawford County	83,862	108	128.8				

Arson

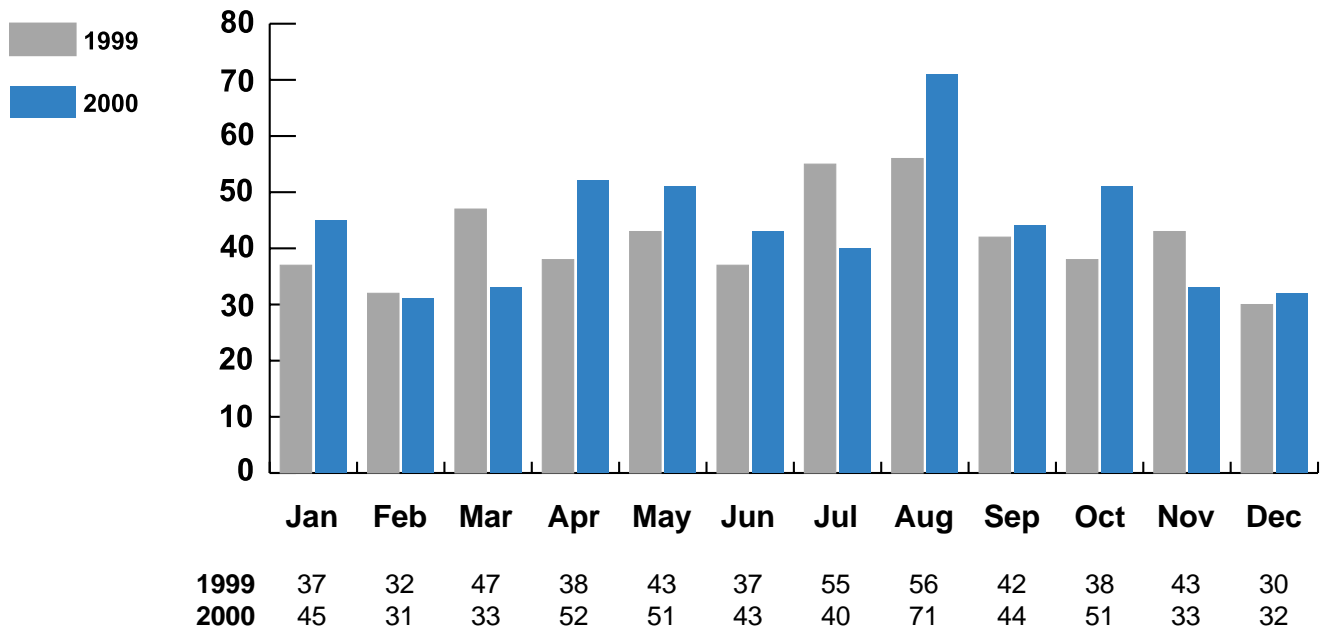
Any willful or malicious burning or attempt to burn, with or without attempt to defraud.

Arsons accounted for less than 1 percent for both the crime index and property crimes. The eight largest law enforcement jurisdictions accounted for 53 percent of arsons in the state.

Trend

Year	Number of Offenses	Percent Change	Rate per 100,000	Percent Cleared
1995	663	6.1%	27.0	18.1%
1996	626	-5.6%	25.1	24.3%
1997	590	-5.8%	23.5	23.8%
1998	565	-4.2%	22.3	22.1%
1999	498	-11.9%	19.5	19.5%
2000	526	5.6%	19.5	22.1%

Arson by Month 1999 - 2000



Arson

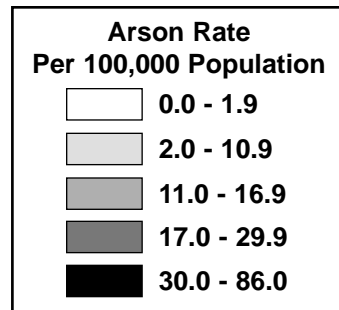
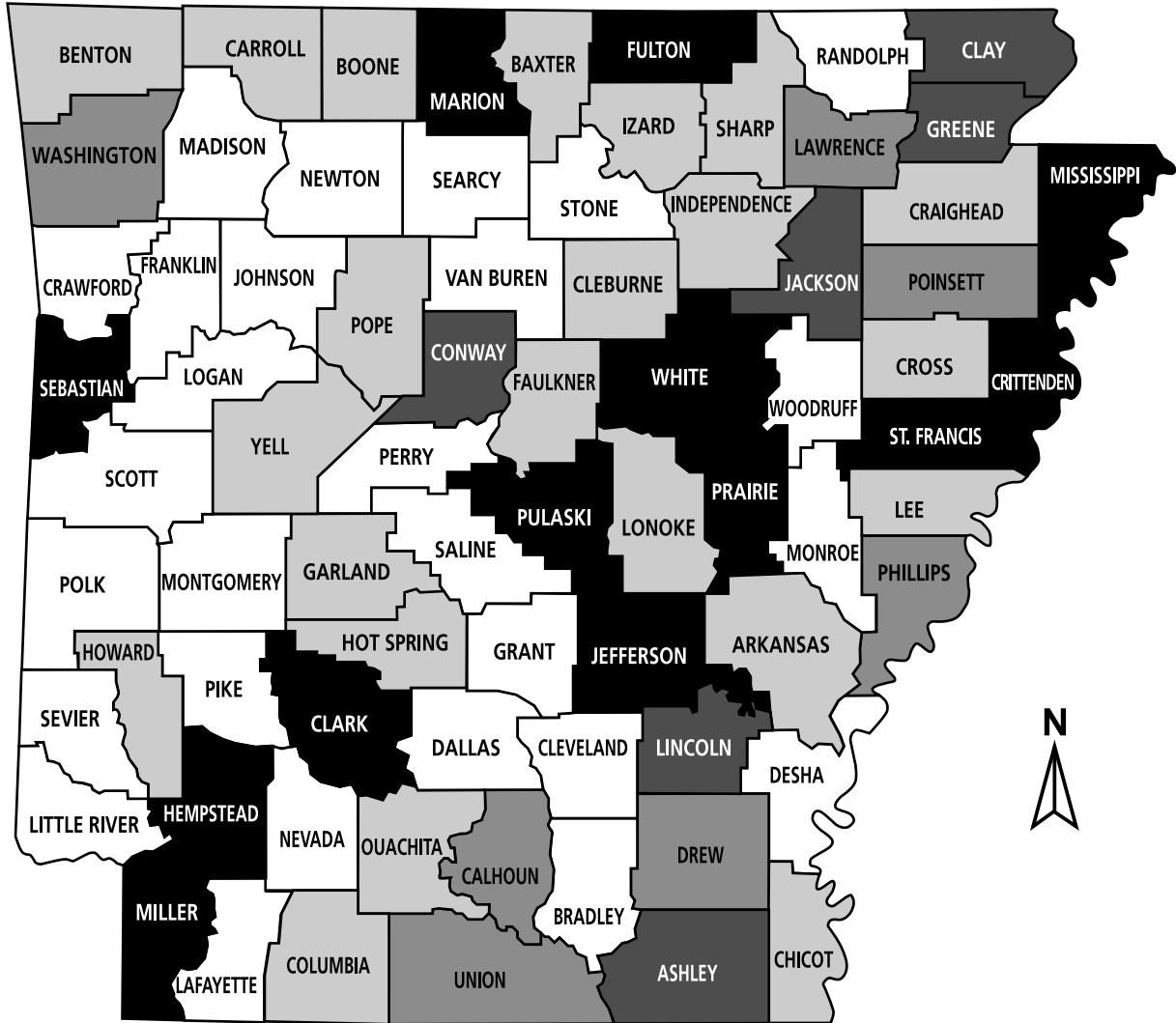
Most Common:
Month - August
Type - Single Residential
Age of Offender - 18-20
Sex of Offender - Male
Race of Offender - White

Property Classification and Value

Property Classification	Number	Clearances	Value of Damage
Single Occupancy Residential: Houses, Townhouses, Duplexes, etc.	237	63	\$4,040,197
Other Residential: Apartments, Tenements, Flats, Hotels, Motels, Inns, Dormitories, Boarding Houses, etc.	36	6	\$2,094,558
Storage: Barns, Garages, Warehouses, etc.	25	4	\$135,387
Industrial/Manufacturing:	0	0	\$0
Other Commercial: Stores, Restaurants, Offices, etc.	19	4	\$2,917,750
Community/Public: Churches, Jails, Schools, Colleges, Hospitals, etc.	17	4	\$176,490
All Other Structure: Out Buildings, Monuments, Buildings Under Construction, etc.	7	5	\$6,150
Total Structure	341	86	\$9,370,532
Motor Vehicles: Automobiles, Trucks, Buses, Motorcycles, etc.	123	15	\$827,849
Other Mobile Property: Trailers, Recreational Vehicles, Airplanes, Boats, etc.	28	8	\$955,250
Total Mobile	151	23	\$1,783,099
Total Other Crops, Timber, Fences, Signs, etc.	34	7	\$24,415
Grand Total	526	116	\$11,178,046

Arson in Arkansas

Rate per 100,000

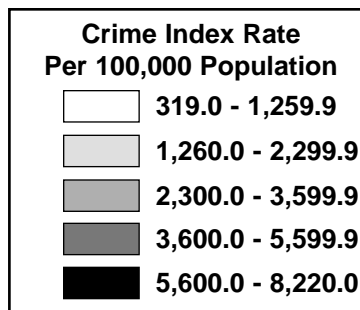
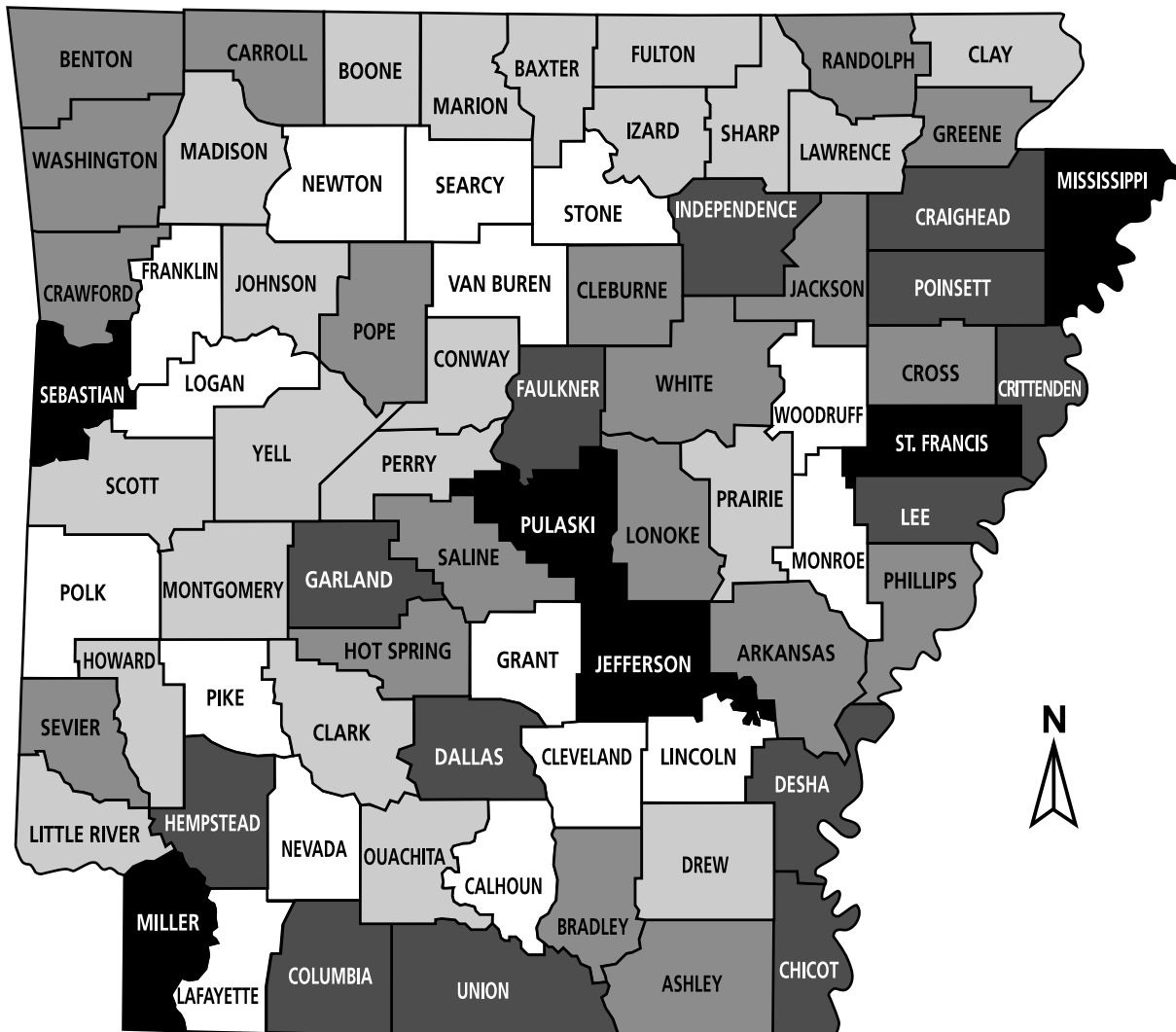


Arson in Arkansas Rate per 100,000

County	Population	Number of Offenses	Crime Rate	County	Population	Number of Offenses	Crime Rate
Bradley County	11,303	0	0.0	Hot Spring County	30,548	2	6.5
Cleveland County	8,967	0	0.0	Howard County	14,335	1	7.0
Dallas County	9,347	0	0.0	Izard County	13,739	1	7.3
Desha County	15,565	0	0.0	Lee County	13,306	1	7.5
Franklin County	17,605	0	0.0	Columbia County	25,867	2	7.7
Grant County	16,748	0	0.0	Garland County	88,515	7	7.9
Johnson County	22,380	0	0.0	Carroll County	23,593	2	8.5
Lafayette County	9,269	0	0.0	Craighead County	81,383	7	8.6
Little River County	13,690	0	0.0	Independence County	34,647	3	8.7
Logan County	22,145	0	0.0	Lonoke County	53,908	5	9.3
Madison County	13,950	0	0.0	Yell County	19,755	2	10.1
Monroe County	10,468	0	0.0	Lawrence County	18,171	2	11.0
Montgomery County	9,158	0	0.0	Poinsett County	25,768	3	11.6
Nevada County	10,503	0	0.0	Union County	47,118	6	12.7
Newton County	8,619	0	0.0	Phillips County	28,343	4	14.1
Perry County	10,141	0	0.0	Washington County	153,604	25	16.3
Pike County	10,951	0	0.0	Drew County	18,284	3	16.4
Polk County	20,545	0	0.0	Calhoun County	5,928	1	16.9
Randolph County	18,760	0	0.0	Greene County	38,136	7	18.4
Saline County	82,109	0	0.0	Conway County	20,806	4	19.2
Scott County	11,153	0	0.0	Ashley County	25,449	5	19.6
Searcy County	8,164	0	0.0	Lincoln County	15,059	3	19.9
Sevier County	15,373	0	0.0	Jackson County	18,354	4	21.8
Stone County	11,757	0	0.0	Clay County	17,839	4	22.4
Van Buren County	16,427	0	0.0	Marion County	15,615	5	32.0
Woodruff County	9,127	0	0.0	Sebastian County	111,334	38	34.1
Crawford County	53,868	1	1.9	White County	68,194	24	35.2
Ouachita County	52,802	2	3.8	Mississippi County	52,308	19	36.3
Cleburne County	24,410	1	4.1	Fulton County	10,849	4	36.9
Arkansas County	21,708	1	4.6	St. Francis County	29,094	11	37.8
Cross County	20,225	1	4.9	Hempstead County	23,150	9	38.9
Baxter County	38,418	2	5.2	Prairie County	9,728	4	41.1
Sharp County	18,578	1	5.4	Miller County	41,260	17	41.2
Pope County	55,114	3	5.4	Pulaski County	365,929	157	42.9
Faulkner County	83,862	5	6.0	Crittenden County	52,536	23	43.8
Boone County	33,369	2	6.0	Clark County	22,427	10	44.6
Benton County	142,968	9	6.3	Jefferson County	84,649	72	85.1
Chicot County	15,569	1	6.4				

Crime Index in Arkansas

Rate per 100,000



Crime Index in Arkansas Rate per 100,000

County	Population	Number of Offenses	Crime Rate	County	Population	Number of Offenses	Crime Rate
Pike County	10,951	35	319.6	Sevier County	15,373	381	2,478.4
Woodruff County	9,127	43	471.1	Benton County	142,968	3,608	2,527.8
Searcy County	8,164	50	612.4	Carroll County	23,593	618	2,627.9
Lafayette County	9,269	68	733.6	Ashley County	25,449	671	2,636.6
Cleveland County	8,967	70	780.6	Greene County	38,136	1,025	2,687.7
Grant County	16,748	143	853.8	Cross County	20,225	544	2,689.7
Newton County	8,619	75	870.2	Crawford County	53,868	1,463	2,715.9
Van Buren County	16,427	145	882.7	Randolph County	18,760	511	2,723.9
Lincoln County	15,059	148	982.8	Lonoke County	53,908	1,537	2,849.3
Calhoun County	5,928	59	995.3	Arkansas County	21,708	656	3,021.9
Monroe County	10,468	111	1,060.4	Hot Spring County	30,548	934	3,057.5
Nevada County	10,503	115	1,094.9	White County	68,194	2,238	3,281.8
Franklin County	17,605	194	1,102.0	Cleburne County	24,410	802	3,285.5
Polk County	20,545	244	1,187.6	Phillips County	28,343	937	3,305.9
Logan County	22,145	269	1,214.7	Saline County	82,109	2,808	3,419.8
Stone County	11,757	148	1,258.8	Jackson County	18,354	642	3,497.9
Madison County	13,950	185	1,326.2	Pope County	55,114	1,950	3,538.1
Sharp County	18,578	250	1,345.7	Washington County	153,604	5,516	3,591.1
Lawrence County	18,171	260	1,430.9	Hempstead County	23,150	860	3,714.9
Izard County	13,739	198	1,441.2	Faulkner County	83,862	3,180	3,791.9
Fulton County	10,849	160	1,474.8	Dallas County	9,347	364	3,894.3
Perry County	10,141	152	1,498.9	Chicot County	15,569	612	3,930.9
Conway County	20,806	312	1,499.6	Independence County	34,647	1,408	4,063.8
Prairie County	9,728	161	1,655.0	Columbia County	25,867	1,063	4,109.5
Montgomery County	9,158	154	1,681.6	Union County	47,118	1,966	4,172.5
Drew County	18,284	311	1,700.9	Craighead County	81,383	3,653	4,488.7
Yell County	19,755	337	1,705.9	Poinsett County	25,768	1,216	4,719.0
Boone County	33,369	574	1,720.2	Lee County	13,306	639	4,802.3
Marion County	15,615	270	1,729.1	Garland County	88,515	4,339	4,902.0
Baxter County	38,418	687	1,788.2	Desha County	15,565	784	5,036.9
Clay County	17,839	325	1,821.9	Crittenden County	52,536	2,789	5,308.7
Howard County	14,335	280	1,953.3	Miller County	41,260	2,375	5,756.2
Scott County	11,153	219	1,963.6	Mississippi County	52,308	3,036	5,804.1
Ouachita County	52,802	1,065	2,017.0	St. Francis County	29,094	1,912	6,571.8
Little River County	13,690	284	2,074.5	Sebastian County	111,334	7,710	6,925.1
Clark County	22,427	479	2,135.8	Pulaski County	365,929	29,008	7,927.2
Johnson County	22,380	499	2,229.7	Jefferson County	84,649	6,951	8,211.6
Bradley County	11,303	267	2,362.2				

