



# **Section 3**

## **Crime Index Data**

# Murder

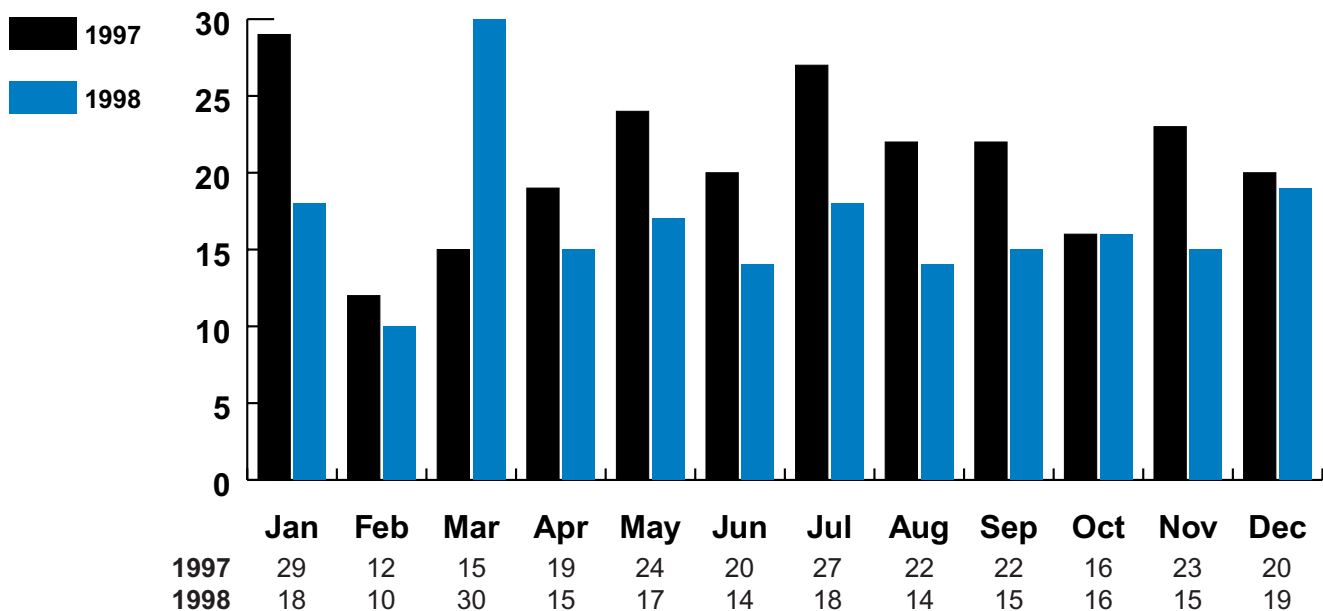
The willful (nonnegligent) killing of one human being by another.

Murders accounted for less than 1 percent of the crime index and 2 percent of violent crimes. The eight largest law enforcement jurisdictions accounted for 32 percent of murders in the state.

## Trend

Year	Number of Offenses	Percent Change	Rate per 100,000	Percent Cleared
1993	247	-4.3%	10.3	87.0%
1994	293	18.6%	12.1	81.0%
1995	259	-11.6%	10.6	78.4%
1996	219	-15.4%	8.8	83.1%
1997	249	13.7%	9.9	81.9%
<b>1998</b>	<b>201<sup>1</sup></b>	<b>-19.3%</b>	<b>7.9</b>	<b>87.5%</b>

## Murder by Month 1997 - 1998



<sup>1</sup>The "total" number in the different murder categories will vary in accordance with offender data.

# Murder

***Most Common:***  
**Month - March**  
**Weapon - Handgun**  
**Age of Offender - 18-20**  
**Sex of Offender - Male**  
**Race of Offender - Black**

## Weapon Type

Weapon Type	Number	Percent Distribution
Handgun	87	41.8%
Rifle	25	12.0%
Shotgun	20	9.6%
Other Firearms	9	4.3%
Knife/Cutting Instrument	29	13.9%
Club or Blunt Instrument	9	4.3%
Hands, Fists, etc.	11	5.3%
Fire	1	0.5%
Strangulation/Asphyxiation	2	1.0%
Other/Weapon Unknown	15	7.2%
<b>Total</b>	<b>208</b>	<b>100.0%</b>

## Circumstances

Circumstances	Number	Percent Distribution
Arguments (Money, Property, etc.)	98	47.1%
Influenced by Alcohol, Drugs	11	5.3%
Felonious Acts	23	11.1%
Gang Killings	1	0.5%
Romantic Triangle	8	3.8%
Other/Unknown	67	32.2%
<b>Total</b>	<b>208</b>	<b>100.0%</b>

# Murder

## Situation

Situation	Number	Percent Distribution
Single Victim		
Single Offender	124	67.8%
Multiple Offenders	11	6.0%
Unknown Offender(s)	38	20.8%
Multiple Victim	7	3.8%
Single Offenders	2	1.1%
Multiple Offenders	1	0.5%
Unknown Offender(s)		
<b>Total</b>	<b>183</b>	<b>100.0%</b>

## Victim - Offender Relationship

Relationship	Number	Percent Distribution
Husband	9	4.3%
Wife	10	4.8%
Mother	2	1.0%
Father	3	1.4%
Son or Daughter	4	1.9%
Other Family	9	4.3%
Neighbor or Friend	4	1.9%
Boyfriend	6	2.9%
Girlfriend	10	4.8%
Other Acquaintance/ Known to Victim	91	43.8%
Stranger	19	9.1%
Unknown	41	19.7%
<b>Total</b>	<b>208</b>	<b>100.0%</b>

# Murder

## Age of Victims

Age	Number	Percent Distribution
Under 1	2	1.0%
1 - 5	5	2.5%
6 - 10	3	1.5%
11 - 14	9	4.5%
15 - 17	6	3.0%
18 - 19	12	6.0%
20 - 24	30	14.9%
25 - 29	18	9.0%
30 - 34	22	10.9%
35 - 39	30	14.9%
40 - 44	20	10.0%
45 - 49	14	7.0%
50 - 54	10	5.0%
55 - 59	6	3.0%
60 - 64	3	1.5%
65 - 69	1	0.5%
70 - 74	3	1.5%
75 & Over	3	1.5%
Unknown	4	2.0%
<b>Total</b>	<b>201</b>	<b>100.0%</b>

## Sex and Race of Victims

Sex and Race	Number	Percent Distribution
Male	142	70.6%
Female	59	29.4%
White	95	47.3%
Black	104	51.7%
Other	2	1.0%

# Rape

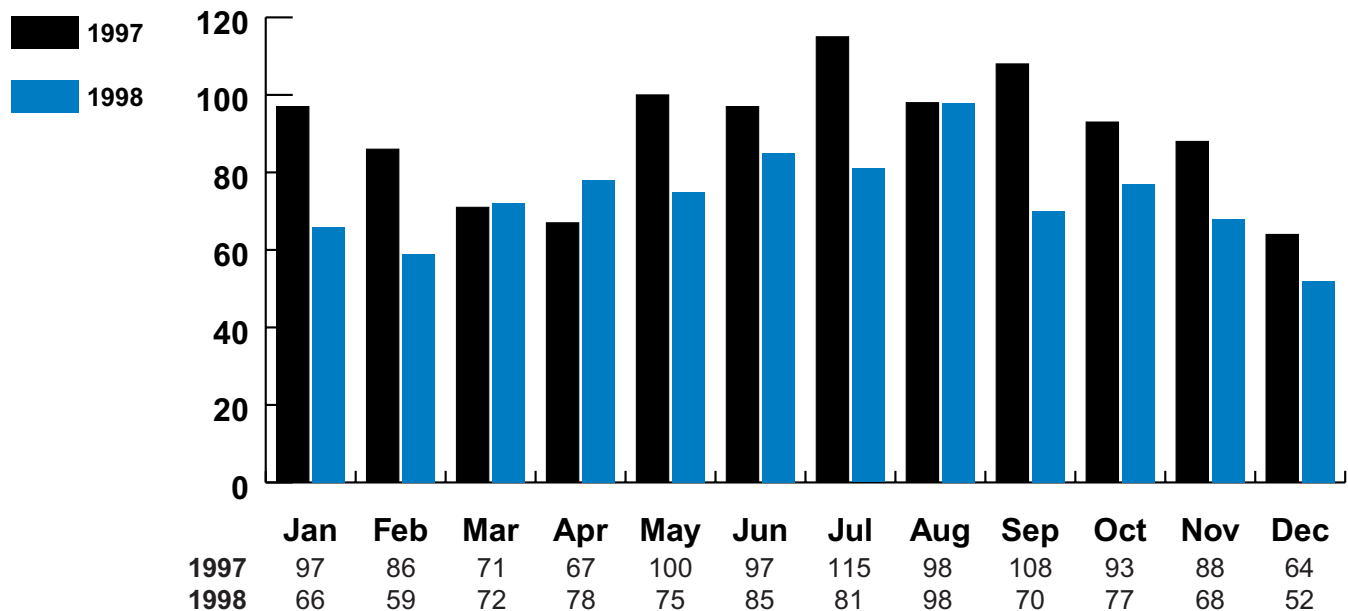
The carnal knowledge of a female through the use or threat of force. Assaults to commit forcible rape are also included.

Rapes accounted for less than 1 percent of the crime index, as well as for violent crimes. The eight largest law enforcement jurisdictions accounted for 46 percent of rapes in the state.

## Trend

Year	No. of Offenses	% Change	Rate per 100,000	% Cleared
1993	1,026	3.8%	42.8	61.0%
1994	1,026	0.0%	42.3	51.8%
1995	923	-10.0%	37.6	61.1%
1996	1,041	12.8%	41.7	63.1%
1997	1,084	4.1%	43.2	61.5%
<b>1998</b>	<b>881</b>	<b>-18.7%</b>	<b>34.8</b>	<b>57.1%</b>

## Rape by Month 1997 - 1998



# Rape

**Most Common:**  
**Month** - August  
**Weapon** - Verbal Threats, Fists, etc.  
**Location** - Victim's Residence  
**Age of Offender** - 30-34  
**Sex of Offender** - Male  
**Race of Offender** - White

## Rape and Attempted Rape

Rape/Attempted Rape	Number	Percent Distribution
Rape	784	89.0%
Attempted Rape	97	11.0%
<b>Total</b>	<b>881</b>	<b>100.0%</b>

## Location

Location of Rape	Number	Percent Distribution
Victim's Residence	352	40.0%
Suspect's Residence	180	20.4%
Other Residence	97	11.0%
Automobiles	39	4.4%
Public Outdoor Areas (Streets, Parks)	80	9.1%
Fields, Vacant Lots, Wooded Areas	36	4.1%
Motels/Hotels	28	3.2%
Bar/Lounge	0	0.0%
Place of Employment	5	0.6%
School/Playground	4	0.5%
All Other Locations	34	3.9%
Unknown	26	3.0%
<b>Total</b>	<b>881</b>	<b>100.0%</b>

# Rape

## Time of Day

Time of Day 0000 - 2400 Hours	Number	Percent Distribution
0001 - 0200	120	13.6%
0201 - 0400	83	9.4%
0401 - 0600	46	5.2%
0601 - 0800	23	2.6%
0801 - 1000	15	1.7%
1001 - 1200	19	2.2%
1201 - 1400	50	5.7%
1401 - 1600	45	5.1%
1600 - 1800	45	5.1%
1801 - 2000	44	5.0%
2001 - 2200	83	9.4%
2201 - 2400	73	8.3%
Unknown	235	26.7%
<b>Total</b>	<b>881</b>	<b>100.0%</b>

## Day of Week

Day of Week	Number	Percent Distribution
Sunday	109	12.4%
Monday	85	9.6%
Tuesday	89	10.1%
Wednesday	85	9.6%
Thursday	92	10.4%
Friday	145	16.5%
Saturday	162	18.4%
Unknown	114	12.9%
<b>Total</b>	<b>881</b>	<b>100.0%</b>



# Rape

## Victim Characteristics

Age of Victim	White	Black	Other	Total
5 & Under	21	13	0	34
6 - 9	37	26	0	63
10 - 13	73	54	1	128
14 - 17	123	70	0	193
18 - 20	69	32	1	102
21 - 24	50	25	1	76
25 - 29	51	41	0	92
30 - 34	39	19	0	58
35 - 39	32	20	0	52
40 - 49	29	26	0	55
50 - 59	5	2	0	7
60 & Over	8	3	0	11
Unknown	0	2	0	0
<b>Total</b>	<b>537</b>	<b>333</b>	<b>3</b>	<b>873<sup>1</sup></b>

<sup>1</sup> There were 8 incidents in which both the race and age were unknown.

## Weapons Used to Exert Force

Weapons Used	Number	Percent Distribution
Firearm	35	4.0%
Knife/Sharp Instrument	52	5.9%
Club/Blunt Instrument	11	1.2%
Verbal Threats, Fists, etc.	774	87.9%
Unknown	9	1.0%
<b>Total</b>	<b>881</b>	<b>100.0%</b>

# Rape

The first race listed is the race of the victim, with the second race being that of the offender(s). For example: black/white means that the victim was black and the offender was white.

## Victim-Offender Race Relationship

Victim/Offender(s) Race	Number	Percent Distribution
White/White	387	43.9%
Black/Black	315	35.8%
Other/Other	1	0.1%
<b>Total Intraracial Rapes</b>	<b>703</b>	<b>79.8%</b>
White/Black	125	14.2%
Black/White	13	1.5%
Other/White	2	0.2%
Other/Black	0	0.0%
White/White & Black <sup>1</sup>	9	1.0%
<b>Total Interracial Rapes</b>	<b>149</b>	<b>16.9%</b>
White/Unknown	16	1.8%
Black/Unknown	5	0.6%
Unknown/White	0	0.0%
Unknown/Unknown	8	0.9%
<b>Total Unknown Rapes</b>	<b>29</b>	<b>3.3%</b>
<b>Total</b>	<b>881</b>	<b>100.0%</b>

<sup>1</sup> Rapes involving offenders of more than one race are counted as interracial.

# Rape

## Relationship of Offender to Victim

Relationship	Number	Percent Distribution
Known to Victim	510	57.9%
Unknown to Victim	219	24.9%
Family Member	149	16.9%
Unknown	3	0.3%
<b>Total</b>	<b>881</b>	<b>100.0%</b>

## Rapes Involving Family Members

Relationship	Number	Percent Distribution
Husband	11	7.4%
Ex-Husband	11	7.4%
Father	40	26.8%
Stepfather	24	16.1%
Grandfather	6	4.0%
Stepgrandfather	5	3.4%
Brother	11	7.4%
Half Brother	0	0.0%
Stepbrother	6	4.0%
Uncle	17	11.4%
Cousin	14	9.4%
Nephew	1	0.7%
Father-in-law	1	0.7%
Brother-in-law	1	0.7%
Son	1	0.7%
Unknown	0	0.0%
<b>Total</b>	<b>149</b>	<b>100.0%</b>

# Rape

## Number of Offenders Per Rape

Offender(s) Per Offense	Number	Percent Distribution
One	785	89.1%
Two	61	6.9%
Three	16	1.8%
Four	8	0.9%
More than four	3	0.3%
Unknown	8	0.9%
<b>Total</b>	<b>881</b>	<b>100.0%</b>

## Offender Characteristics

Age of Offender	White	Black	Unknown	Total
Under 10	0	1	0	1
10 - 15	23	49	0	72
16 - 20	91	148	1	240
21 - 25	76	66	0	142
26 - 30	51	55	1	107
31 - 35	56	35	1	92
36 - 40	44	42	0	86
41 - 45	25	22	0	47
46 - 50	13	8	0	21
51 - 60	16	11	0	27
61 and Over	8	3	0	11
Unknown	46	87	33	166
<b>Total</b>	<b>449</b>	<b>527</b>	<b>36</b>	<b>1,012<sup>1</sup></b>

<sup>1</sup> The number of offenders does not equal the number of victims due to cases of multiple offenders per victim.

# Rape

## Rape Reporting Time Lapse

Hours Reporting Time	Number	Percent Distribution
Less than 1	150	17.0%
1 - 4	112	12.7%
4 - 8	75	8.5%
8 - 12	48	5.4%
12 - 24	120	13.6%
More than 24	229	26.0%
Unknown	147	16.7%
<b>Total</b>	<b>881</b>	<b>100.0%</b>

## Medical Attention for Victims

Type of Rape	Received Medical Attention	No Medical Attention	Unknown	Total
Actual	519 (58.9%)	175 (19.9%)	90 (10.2%)	784 (89.0%)
Attempt	26 (3.0%)	55 (6.2%)	16 (1.8%)	97 (11.0%)
<b>Total</b>	<b>545 (61.9%)</b>	<b>230 (26.1%)</b>	<b>106 (12.0%)</b>	<b>881 (100.0%)</b>

# Robbery

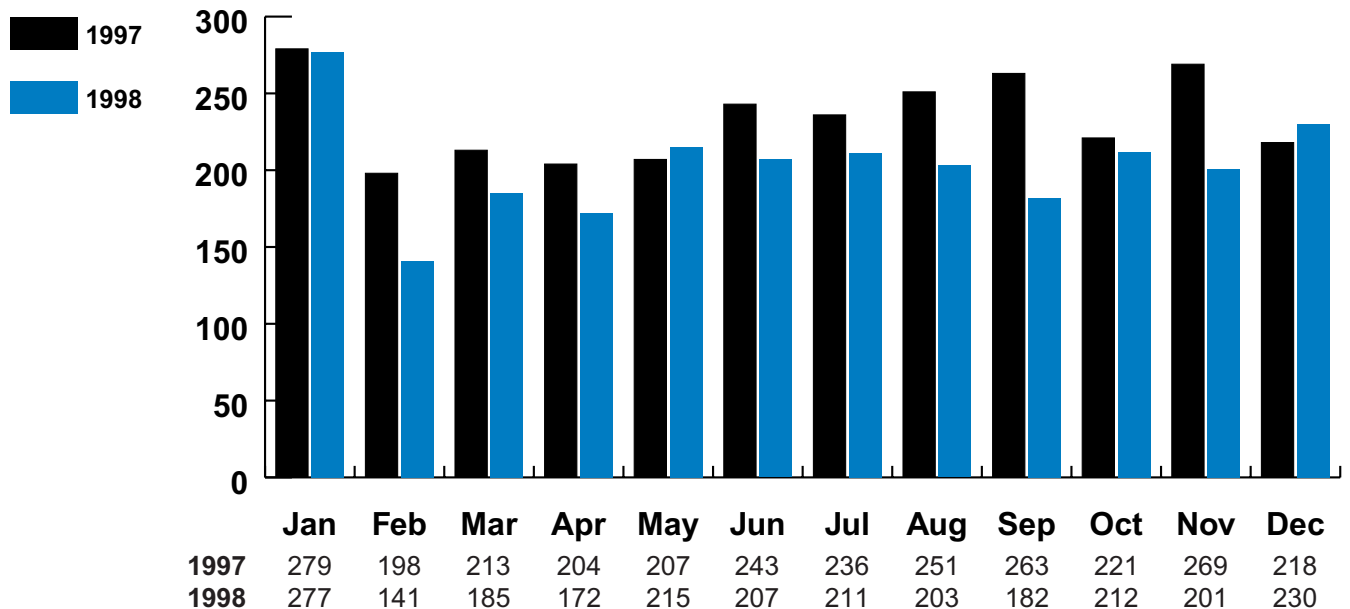
The taking, or attempting to take, anything of value under confrontational circumstances from a person by use of force, threat of force, or by putting the victim in fear of immediate harm.

Robberies accounted for 2 percent of the crime index and 20 percent of violent crimes. The eight largest law enforcement jurisdictions accounted for 62 percent of robberies in the state.

## Trend

Year	Number of Offenses	Percent Change	Rate per 100,000	Percent Cleared
1993	3,018	0.5%	126.0	31.5%
1994	3,150	4.4%	130.0	30.6%
1995	3,115	-1.1%	127.0	31.9%
1996	2,858	-8.3%	114.4	34.4%
1997	2,802	-2.0%	111.6	33.2%
<b>1998</b>	<b>2,436</b>	<b>-13.1%</b>	<b>96.2</b>	<b>34.6%</b>

## Robbery by Month 1997 -1998



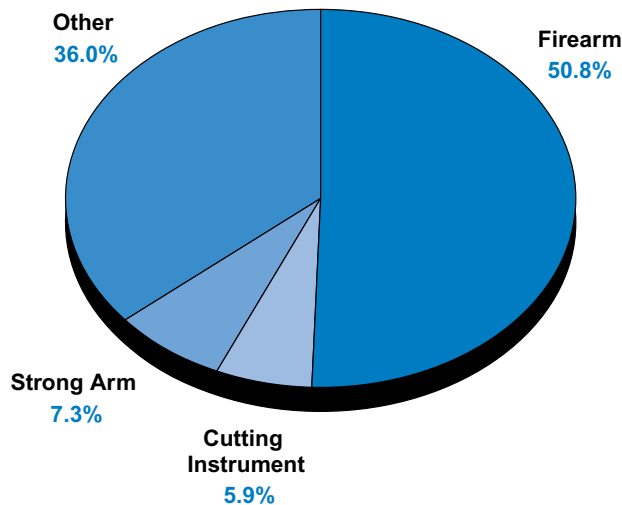
# Robbery

**Most Common:**  
**Month** - January  
**Weapon** - Firearm  
**Age of Offender** - 18-20  
**Sex of Offender** - Male  
**Race of Offender** - Black

## Premise

Premise	Number	Percent Distribution	Value Stolen	Percent Distribution	Average Value
Street/Highway	830	34.1%	\$489,665	27.2%	\$590
Commercial House	351	14.4%	\$478,671	26.6%	\$1,364
Service Station	49	2.0%	\$13,345	0.7%	\$272
Convenience Store	174	7.1%	\$55,346	3.1%	\$318
Residence	491	20.2%	\$362,509	20.1%	\$738
Bank	19	0.8%	\$115,295	6.4%	\$6,068
Miscellaneous	522	21.4%	\$286,150	15.9%	\$548
<b>Total</b>	<b>2,436</b>	<b>100.0%</b>	<b>\$1,800,981</b>	<b>100.0%</b>	<b>\$739</b>

## Weapons



# Aggravated Assault

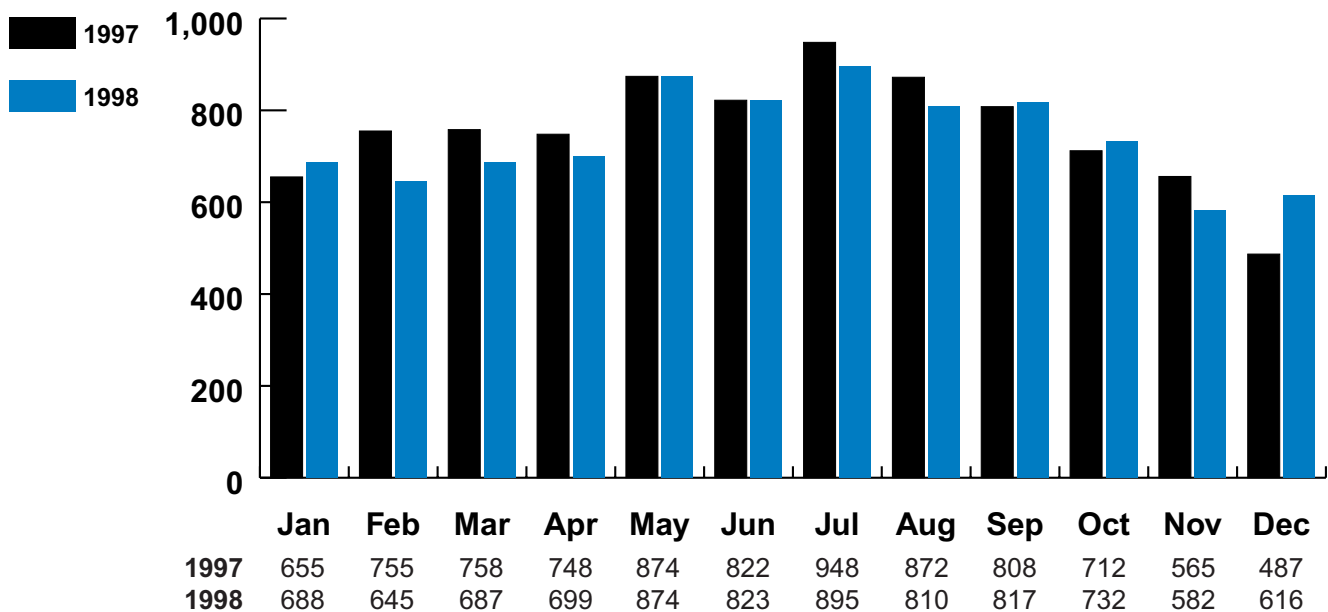
An unlawful attack by one person upon another for the purpose of inflicting severe bodily injury, usually accompanied by the use of a weapon or other means likely to produce death or serious bodily harm. Attempts are included.

Aggravated assaults accounted for 8 percent of the crime index and 72 percent of violent crimes. The eight largest law enforcement jurisdictions accounted for 37 percent of aggravated assaults in the state.

## Trend

Year	Number of Offenses	Percent Change	Rate per 100,000	Percent Cleared
1993	10,008	4.8%	417.7	62.2%
1994	10,098	0.9%	417.0	60.2%
1995	9,416	-6.8%	383.9	58.0%
1996	8,996	-4.5%	360.1	59.3%
1997	9,095	1.1%	362.3	61.8%
<b>1998</b>	<b>8,868</b>	<b>-2.5%</b>	<b>350.2</b>	<b>59.7%</b>

## Aggravated Assault by Month 1997 -1998





# Aggravated Assault

**Most Common:**

**Month - July**

**Weapon - Hands, Fists, Feet**

**Age of Offender - 25-29**

**Sex of Offender - Male**

**Race of Offender - Black**

## Weapon Type

Weapon Type	Number	Percent Distribution
Firearm	1,962	22.1%
Cutting Instrument	1,408	15.9%
Hands/Fists/Feet	3,589	40.5%
Other Weapon	1,909	21.5%
<b>Total</b>	<b>8,868</b>	<b>100.0%</b>

# Burglary

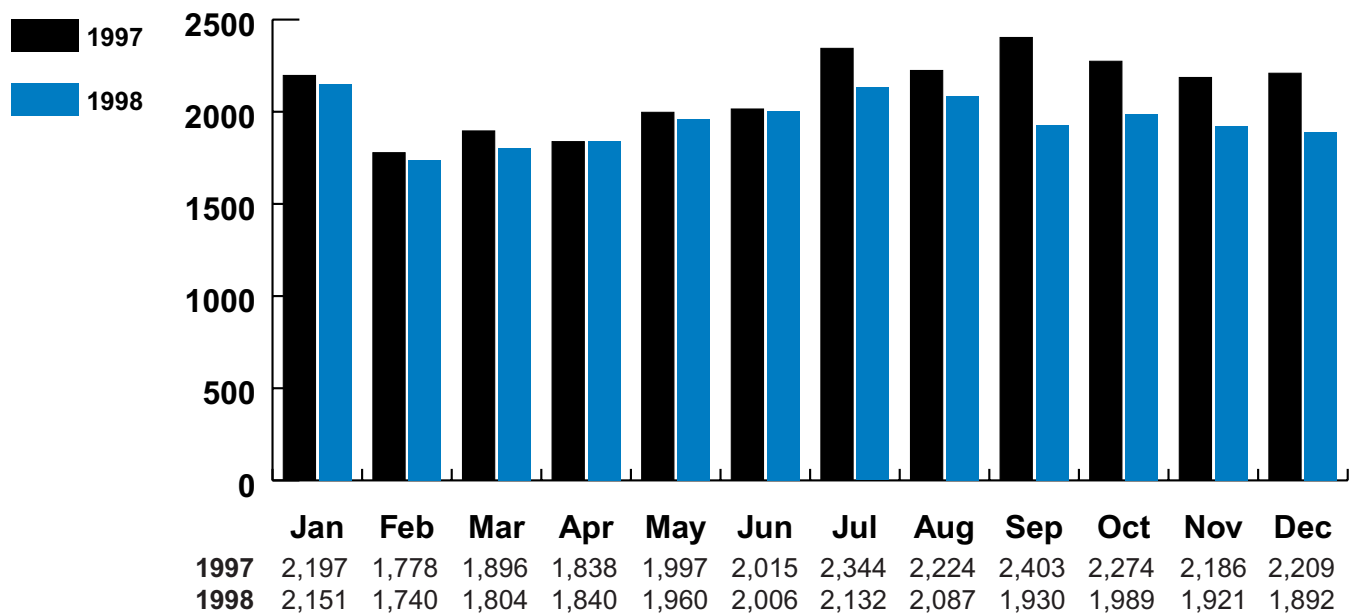
The unlawful entry of a structure to commit a felony or theft.

Burglaries accounted for 22 percent of the crime index and 24 percent of property crimes. The eight largest law enforcement jurisdictions accounted for 37 percent of burglaries in the state.

## Trend

Year	Number of Offenses	Percent Change	Rate per 100,000	Percent Cleared
1993	26,525	1.5%	1,107.0	16.9%
1994	26,833	1.2%	1,107.9	17.0%
1995	24,702	-7.9%	1,007.1	18.3%
1996	23,831	-3.5%	953.8	19.2%
1997	25,361	6.4%	1,010.2	18.4%
<b>1998</b>	<b>23,452</b>	<b>-7.5%</b>	<b>926.0</b>	<b>17.2%</b>

## Burglary by Month 1997 - 1998



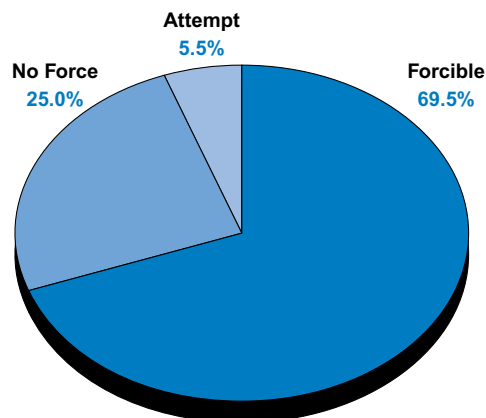
# Burglary

**Most Common:**  
**Month - January**  
**Type - Forcible Entry**  
**Age of Offender - 18-20**  
**Sex of Offender - Male**  
**Race of Offender - White**

## Premise, Time and Value

Premise	Number	Percent Distribution	Value Stolen	Percent Distribution	Average Value
<b>Residence</b>					
Night	4,989	21.3%	\$4,147,416	18.0%	\$831
Day	6,847	29.2%	\$7,112,487	30.9%	\$1,039
Unknown	4,864	20.7%	\$5,458,966	23.8%	\$1,122
<b>Total</b>	<b>16,700</b>	<b>71.2%</b>	<b>\$16,718,869</b>	<b>72.7%</b>	<b>\$1,001</b>
<b>Non-Residence</b>					
Night	3,521	15.0%	\$3,074,342	13.4%	\$873
Day	1,541	6.6%	\$1,120,639	4.9%	\$727
Unknown	1,690	7.2%	\$2,070,517	9.0%	\$1,225
<b>Total</b>	<b>6,752</b>	<b>28.8%</b>	<b>\$6,265,498</b>	<b>27.3%</b>	<b>\$928</b>
<b>Total</b>	<b>23,452</b>	<b>100.0%</b>	<b>\$22,984,367</b>	<b>100.0%</b>	<b>\$980</b>

## Type of Entry



# Theft

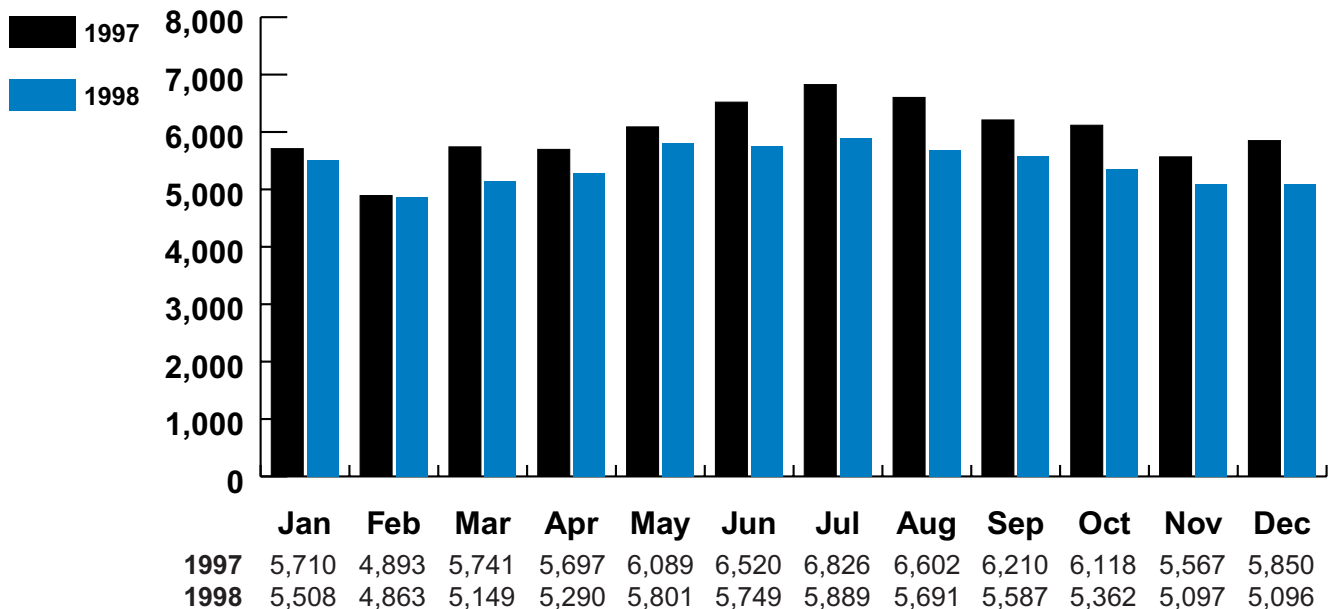
The unlawful taking or stealing of property or articles without the use of force, violence or fraud.

Thefts accounted for 60 percent of the crime index and 68 percent of property crimes. The eight largest law enforcement jurisdictions accounted for 41 percent of thefts in the state.

## Trend

Year	Number of Offenses	Percent Change	Rate per 100,000	Percent Cleared
1993	67,443	2.1%	2,814.7	27.3%
1994	68,270	1.2%	2,818.9	25.6%
1995	69,728	2.1%	2,842.9	24.0%
1996	72,820	4.4%	2,914.6	25.1%
1997	71,823	-1.4%	2,860.8	24.6%
<b>1998</b>	<b>65,082</b>	<b>-9.4%</b>	<b>2,569.8</b>	<b>22.6%</b>

## Theft by Month 1997 -1998



# Theft

**Most Common:**

**Month - July**

**Type - From Motor Vehicles**

**Age of Offender - 18-20**

**Sex of Offender - Male**

**Race of Offender - White**

## Theft by Type

Premise	Number	Percent Distribution	Value Stolen	Percent Distribution	Average Value
Pocket-Picking	316	0.5%	\$64,296	0.2%	\$203
Purse Snatching	288	0.4%	\$65,869	0.2%	\$229
Shoplifting	7,506	11.5%	\$1,000,112	2.4%	\$133
From Motor Vehicles	12,136	18.6%	\$6,856,931	16.5%	\$565
Motor Vehicle Parts	6,112	9.4%	\$5,557,374	13.4%	\$909
Bicycles	2,880	4.4%	\$527,140	1.3%	\$183
From Buildings	10,033	15.4%	\$8,007,788	19.3%	\$798
From Coin Operated Machines	586	0.9%	\$139,216	0.3%	\$238
Other	25,225	38.8%	\$19,258,262	46.4%	\$763
<b>Total</b>	<b>65,082</b>	<b>100.0%</b>	<b>\$41,476,988</b>	<b>100.0%</b>	<b>\$637</b>

## Theft by Value

Premise	Number	Percent Distribution	Value Stolen	Percent Distribution	Average Value
Over \$200	24,772	38.1%	\$39,094,766	94.3%	\$1,578
\$50 To \$200	16,977	26.1%	\$2,001,358	4.8%	\$118
Under \$50	23,333	35.9%	\$380,864	0.9%	\$16
<b>Total</b>	<b>65,082</b>	<b>100.0%</b>	<b>\$41,476,988</b>	<b>100.0%</b>	<b>\$637</b>

# Motor Vehicle Theft

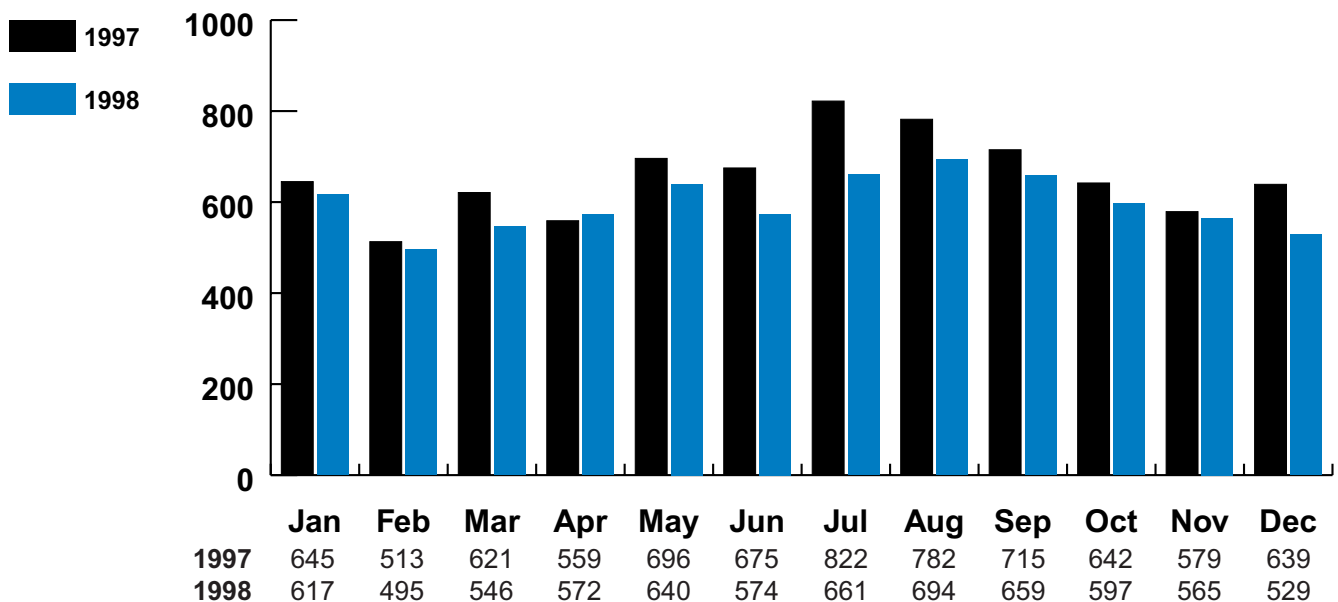
The unlawful taking or stealing of a motor vehicle, including attempts.

Motor vehicle thefts accounted for 7 percent of the crime index and 7 percent of property crimes. The eight largest law enforcement jurisdictions accounted for 45 percent of motor vehicle thefts in the state.

## Trend

Year	Number of Offenses	Percent Change	Rate per 100,000	Percent Cleared
1993	7,784	-1.3%	324.9	30.4%
1994	7,702	-1.1%	318.0	30.0%
1995	8,063	+4.7%	328.7	31.3%
1996	7,822	-3.0%	313.1	30.6%
1997	7,888	+0.8%	314.2	31.2%
<b>1998</b>	<b>7,149</b>	<b>-9.4%</b>	<b>282.3</b>	<b>30.8%</b>

## Motor Vehicle Theft by Month 1997 -1998



# Motor Vehicle Theft

**Most Common:**  
**Month - August**  
**Type - Automobile**  
**Sex of Offender - Male**  
**Race of Offender - White**  
**Age of Offender - 15-17**

## Motor Vehicle Theft by Type

Type	Number	Percent Distribution	Percent Cleared
Autos	4,314	60.3%	32.2%
Trucks & Buses	1,752	24.5%	32.9%
Other Vehicles	1,083	15.1%	22.0%
<b>Total</b>	<b>7,149</b>	<b>100.0%</b>	<b>30.8%</b>

## Recovery by Jurisdiction

Where Recovered	1997	1998	Percent Change
In same jurisdiction as stolen	2,983	2,704	-9.4%
In another jurisdiction	2,375	1,928	-18.8%
<b>Total</b>	<b>5,358</b>	<b>4,632</b>	<b>-13.5%</b>

# Arson

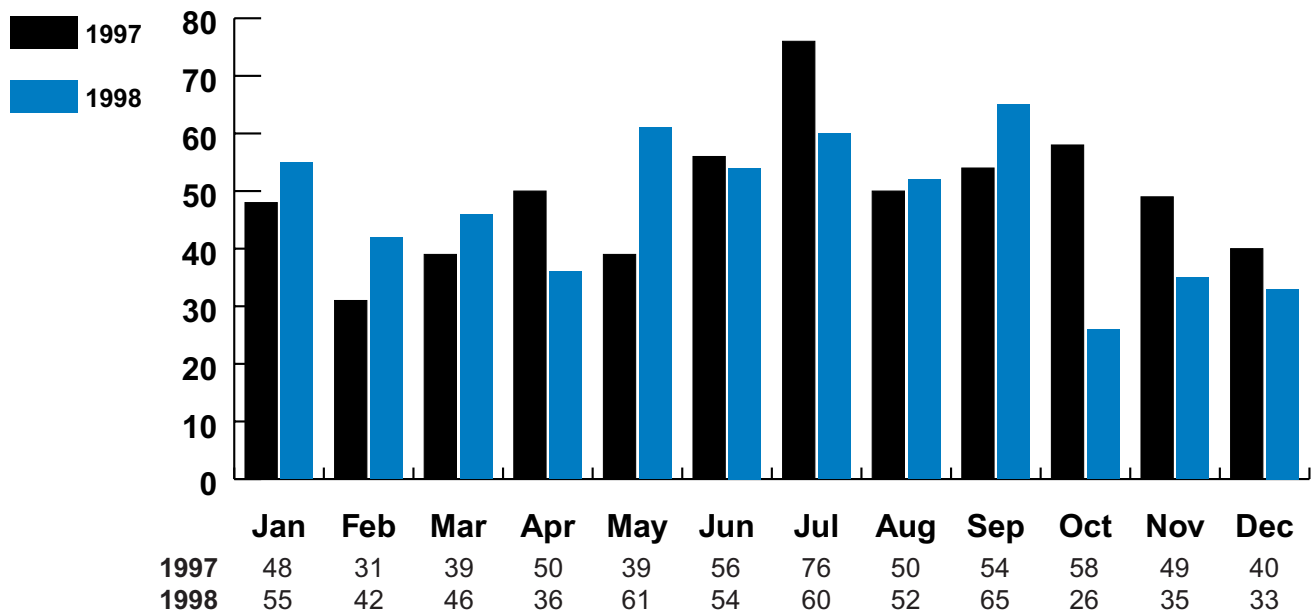
Any willful or malicious burning or attempts to burn, with or without attempt to defraud.

Arsons accounted for less than 1 percent for both the crime index and property crimes. The eight largest law enforcement jurisdictions accounted for 44 percent of arsons in the state.

## Trend

Year	Number of Offenses	Percent Change	Rate per 100,000	Percent Cleared
1993	638	-9.8%	26.6	21.5%
1994	625	-2.0%	25.8	22.7%
1995	663	6.1%	27.0	18.1%
1996	626	-5.6%	25.1	24.3%
1997	590	-5.8%	23.5	23.8%
<b>1998</b>	<b>565</b>	<b>-4.2%</b>	<b>22.3</b>	<b>22.1%</b>

## Arson by Month 1997 - 1998





# Arson

**Most Common:**  
**Month** - September  
**Type** - Single Residential  
**Age of Offender** - 18-20  
**Sex of Offender** - Male  
**Race of Offender** - White

## Property Classification and Value

Property Classification	Number	Clearances	Value of Damage
Single Occupancy Residential: Houses, Townhouses, Duplexes, etc.	237	57	\$3,143,725
Other Residential: Apartments, Tenements, Flats, Hotels, Motels, Inns, Dormitories, Boarding Houses, etc.	54	18	\$749,595
Storage: Barns, Garages, Warehouses, etc.	18	2	\$184,250
Industrial/Manufacturing	1	0	\$100,000
Other Commercial: Stores, Restaurants, Offices, etc.	27	4	\$1,548,743
Community/Public: Churches, Jails, Schools, Colleges, Hospitals, etc.	22	14	\$3,704,066
All Other Structure: Out Buildings, Monuments, Buildings Under Construction, etc.	13	4	\$30,310
<b>Total Structure</b>	<b>372</b>	<b>99</b>	<b>\$9,460,689</b>
Motor Vehicles: Automobiles, Trucks, Buses, Motorcycles, etc.	158	19	\$893,473
Other Mobile Property: Trailers, Recreational Vehicles, Airplanes, Boats, etc.	17	3	\$227,400
<b>Total Mobile</b>	<b>175</b>	<b>22</b>	<b>\$1,120,873</b>
<b>Total Other</b> Crops, Timber, Fences, Signs, etc.	<b>18</b>	<b>4</b>	<b>\$6,095</b>
<b>Grand Total</b>	<b>565</b>	<b>125</b>	<b>\$10,587,657</b>

